

\$629,999 - 3114 36 Avenue Sw, Calgary

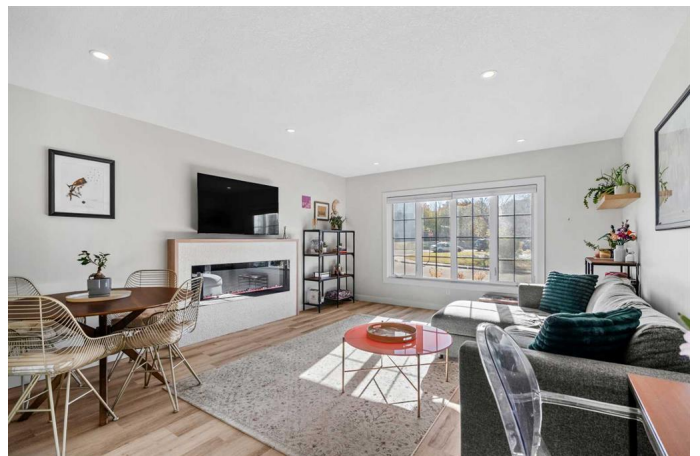
MLS® #A2264869

\$629,999

3 Bedroom, 2.00 Bathroom, 879 sqft
Residential on 0.07 Acres

Rutland Park, Calgary, Alberta

OPEN HOUSE SATURDAY OCT. 18TH 12-2 PM! Modern, chic, inner-city living without the HIGH price tag! This fully renovated, semi-detached bungalow is the perfect option for those who want contemporary style in an unbeatable location. 3 bedrooms, 2 full bathrooms, a fully finished lower level, fully fenced yard AND a double detached garage - This home checks all your boxes. You will be impressed from the moment you pull up with the adorable curb appeal, perfect for decorating every season. Entering the home you'll love the vinyl plank flooring throughout, and the soft and soothing cream white walls. The living/dining area is a great size, with a large south facing window letting the daylight shine in. The electric fireplace is chic and timeless, tying into the rest of the homes color palette which makes it suitable for all tastes and styles! The kitchen is classic, with white shaker cabinets, deep drawers for adequate storage, white quartz counter-tops, and stainless steel appliances. There are 2 great sized bedrooms at the rear of the home, and a full 4 piece bathroom to complete the main floor. The lower level is fully finished with a HUGE rec room and additional flex space. Here you will find the Primary Retreat - a large room, perfectly situated with it's own 3 piece en-suite and connected to the laundry room. The backyard is fully fenced and is a great size for inner-city living! The double detached garage is the cherry on top, in addition to ample street parking out front. LOCATION,



LOCATION, LOCATION, on a quiet street in Rutland Park, close to schools for kids all ages, MRU, Marda Loop, shopping, parks, playgrounds, and most importantly - the Legendary Glamorgan Bakery. This is your opportunity to make SW's Rutland Park home! Book your private showing today.

Built in 1957

Essential Information

MLS® #	A2264869
Price	\$629,999
Bedrooms	3
Bathrooms	2.00
Full Baths	2
Square Footage	879
Acres	0.07
Year Built	1957
Type	Residential
Sub-Type	Semi Detached
Style	Side by Side, Bungalow
Status	Active

Community Information

Address	3114 36 Avenue Sw
Subdivision	Rutland Park
City	Calgary
County	Calgary
Province	Alberta
Postal Code	T3E 1B9

Amenities

Parking Spaces	2
Parking	Double Garage Detached
# of Garages	2

Interior

Interior Features Built-in Features, No Smoking Home, Master Downstairs, Stone

	Counters
Appliances	Dishwasher, Electric Stove, Garage Control(s), Microwave Hood Fan, Refrigerator, Washer/Dryer Stacked, Window Coverings
Heating	Forced Air
Cooling	None
Fireplace	Yes
# of Fireplaces	1
Fireplaces	Electric
Has Basement	Yes
Basement	Finished, Full

Exterior

Exterior Features	Other
Lot Description	Back Lane, Back Yard, Landscaped, Lawn, Level, Rectangular Lot
Roof	Asphalt Shingle
Construction	Composite Siding, Wood Frame
Foundation	Poured Concrete

Additional Information

Date Listed	October 16th, 2025
Days on Market	2
Zoning	R-CG

Listing Details

Listing Office	Real Broker
----------------	-------------

Data is supplied by Pillar 9â„¢ MLSÂ® System. Pillar 9â„¢ is the owner of the copyright in its MLSÂ® System. Data is deemed reliable but is not guaranteed accurate by Pillar 9â„¢. The trademarks MLSÂ®, Multiple Listing ServiceÂ® and the associated logos are owned by The Canadian Real Estate Association (CREA) and identify the quality of services provided by real estate professionals who are members of CREA. Used under license.