

# \$10 - 11, 8802 112 Street, Grande Prairie

MLS® #A2253861

## \$10

0 Bedroom, 0.00 Bathroom,  
Commercial on 3.70 Acres

Richmond Industrial Park, Grande Prairie,  
Alberta

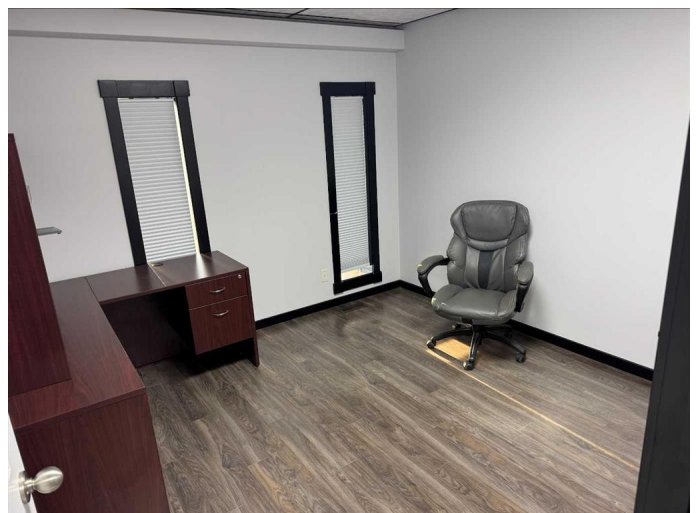
For Lease: Awesome 2 storey office space with approximately 2,484 square feet of office space and a 2,000 square foot bay. Landlord is only charging for 3,384 square feet when there is actually over 4,400 square feet! How's that for an amazing deal!!! Main floor is set up nicely with a large reception area, offices, board room & 2 bathrooms and the second floor has 5 offices and a large meeting room. Nice laminate flooring upstairs and ceramic tile on main floor show room. Basic Rent: \$2,820.00 plus GST (\$141.00) = \$2,961.00 and Additional rent is \$4.00 PSF = \$1,128.00 plus GST (\$56.40) = \$1,184.40. Total monthly payment of \$4,145.40. The exterior of this building was renovated a couple years back and has very attractive street appeal!!

Built in 1980

## Essential Information

MLS® #	A2253861
Price	\$10
Bathrooms	0.00
Acres	3.70
Year Built	1980
Type	Commercial
Sub-Type	Industrial
Status	Active

## Community Information



Address	11, 8802 112 Street
Subdivision	Richmond Industrial Park
City	Grande Prairie
County	Grande Prairie
Province	Alberta
Postal Code	T8V 6A4

### **Interior**

Heating	Space Heater
---------	--------------

### **Additional Information**

Date Listed	September 3rd, 2025
Days on Market	6
Zoning	IG

### **Listing Details**

Listing Office	RE/MAX Grande Prairie
----------------	-----------------------

Data is supplied by Pillar 9â„¢ MLSÂ® System. Pillar 9â„¢ is the owner of the copyright in its MLSÂ® System. Data is deemed reliable but is not guaranteed accurate by Pillar 9â„¢. The trademarks MLSÂ®, Multiple Listing ServiceÂ® and the associated logos are owned by The Canadian Real Estate Association (CREA) and identify the quality of services provided by real estate professionals who are members of CREA. Used under license.