

\$537,900 - 7 Reighley Close, Red Deer

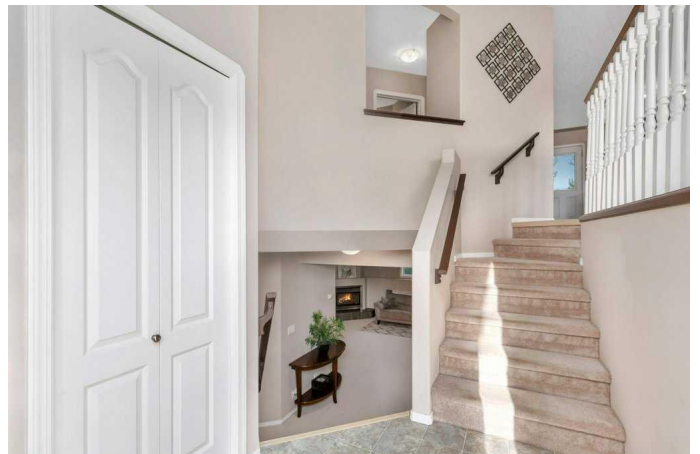
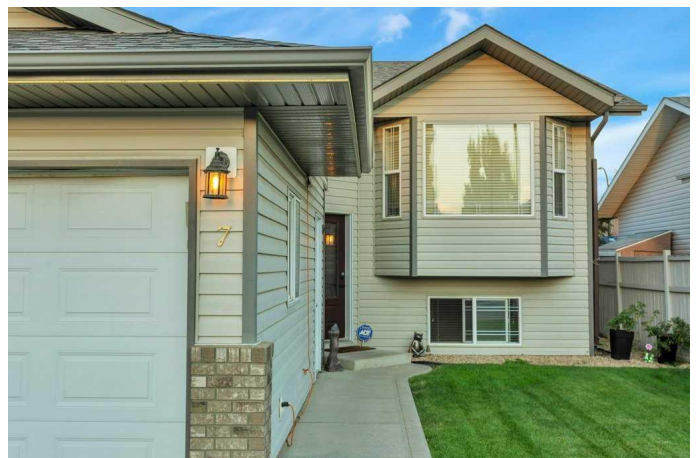
MLS® #A2252817

\$537,900

4 Bedroom, 3.00 Bathroom, 1,091 sqft
Residential on 0.15 Acres

Rosedale Meadows, Red Deer, Alberta

READY TO FALL IN LOVE IN ROSEDALE MEADOWS? This fully developed four bedroom, three bathroom bi-level boasts pride of ownership and did I mention the triple car garage and RV parking?! Step into the spacious foyer which leads into the open concept main floor space which is complemented by vaulted ceilings. The living room features a large west facing bay window offering tons of natural light, while the dining area can easily accommodate a large table for family get togethers. You'll love spending time in the kitchen which offers a functional layout with recently stained cabinets, ample cabinet & counter space with an eating bar, pantry, newer stainless steel appliances, windows above the sink overlooking the backyard, plus a garden door for access to the deck and yard. The primary bedroom is roomy with space for a king bed plus other pieces of furniture, has dual closets and a three piece ensuite. The second main floor bedroom is conveniently located next to the four piece bathroom. Head downstairs into the fully finished basement which offers a massive family room with gas fireplace, two additional bedrooms, three piece bathroom and separate laundry room. Outside you'll find the fully fenced backyard which offers low maintenance landscaping and underground sprinklers in the front and rear yard. RV parking on the north side of the house has a gravel parking pad and sliding gate into the yard if you need more space for that extra long RV. Triple attached garage is



fully finished and heated by an electric heater. Access into the garage is convenient with three overhead doors and a man door that leads to the RV parking pad. Located on a quiet close with easy access to parks, playgrounds and walking trails. This home is one you're going to want to see!

Built in 2003

Essential Information

MLS® #	A2252817
Price	\$537,900
Bedrooms	4
Bathrooms	3.00
Full Baths	3
Square Footage	1,091
Acres	0.15
Year Built	2003
Type	Residential
Sub-Type	Detached
Style	Bi-Level
Status	Active

Community Information

Address	7 Reighley Close
Subdivision	Rosedale Meadows
City	Red Deer
County	Red Deer
Province	Alberta
Postal Code	T4P 3V7

Amenities

Parking Spaces	6
Parking	220 Volt Wiring, Alley Access, Concrete Driveway, Insulated, Parking Pad, RV Access/Parking, Triple Garage Attached, RV Gated
# of Garages	3

Interior

Interior Features	Breakfast Bar, Central Vacuum, Closet Organizers, Laminate Counters, Open Floorplan, Pantry, Vaulted Ceiling(s), Vinyl Windows
Appliances	Dishwasher, Electric Stove, Garage Control(s), Microwave Hood Fan, Refrigerator, Washer/Dryer
Heating	Forced Air, Natural Gas
Cooling	None
Fireplace	Yes
# of Fireplaces	1
Fireplaces	Family Room, Gas, Tile
Has Basement	Yes
Basement	Finished, Full

Exterior

Exterior Features	None
Lot Description	Back Lane, Back Yard, Corner Lot, Landscaped, Level, Street Lighting, Cul-De-Sac
Roof	Asphalt Shingle
Construction	Stone, Vinyl Siding
Foundation	Poured Concrete

Additional Information

Date Listed	September 2nd, 2025
Days on Market	26
Zoning	R-L

Listing Details

Listing Office Royal LePage Network Realty Corp.

Data is supplied by Pillar 9â,,ç MLSÂ® System. Pillar 9â,,ç is the owner of the copyright in its MLSÂ® System. Data is deemed reliable but is not guaranteed accurate by Pillar 9â,,ç. The trademarks MLSÂ®, Multiple Listing ServiceÂ® and the associated logos are owned by The Canadian Real Estate Association (CREA) and identify the quality of services provided by real estate professionals who are members of CREA. Used under license.