

\$60,000 - 216 Wellsite Drive, Red Earth Creek

MLS® #A2251942

\$60,000

0 Bedroom, 0.00 Bathroom,
Commercial on 0.00 Acres

NONE, Red Earth Creek, Alberta

Fantastic Opportunity! This 3.61-acre commercial property offers endless potential for your business. Featuring a 1600 sq. ft. shop with full services already in place, plus a hitching rail for trucks and a large graveled yard, this property is ready to go. Shop is a 40 by 40 by 16'H insulated steel building, with 2-12'W by 14' H OH doors, OH and floor heat, and a 8 by 10 utility room with Boiler and air compressor. Multiple outbuildings are included, giving you even more room for storage or operations. Whether you're looking to buy or lease, this is the perfect spot to establish or grow your company. At just \$60,000, you can't go wrong! call today to book a viewing or get more details!

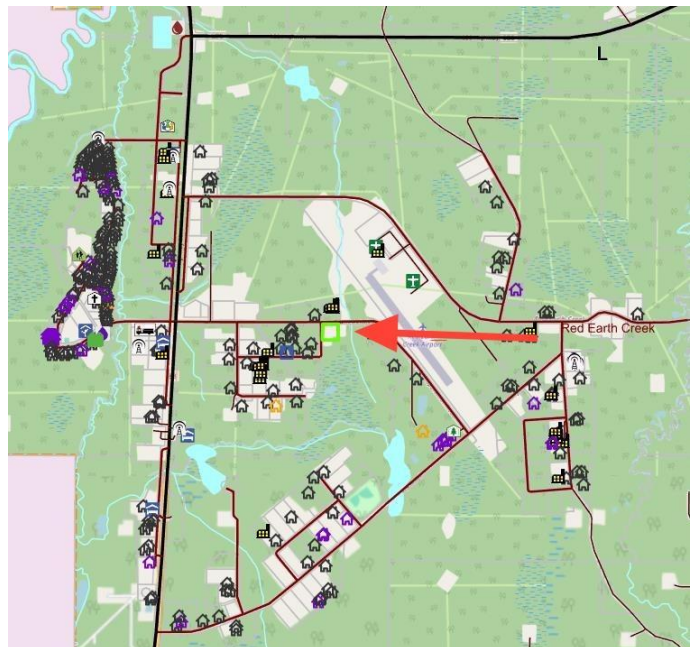
Built in 1980

Essential Information

| | |
|------------|------------|
| MLS® # | A2251942 |
| Price | \$60,000 |
| Bathrooms | 0.00 |
| Acres | 0.00 |
| Year Built | 1980 |
| Type | Commercial |
| Sub-Type | Mixed Use |
| Status | Active |

Community Information

Address 216 Wellsite Drive



| | |
|-------------|-----------------------------|
| Subdivision | NONE |
| City | Red Earth Creek |
| County | Opportunity No. 17, M.D. of |
| Province | Alberta |
| Postal Code | T0G0C1 |

Additional Information

| | |
|----------------|-------------------|
| Date Listed | August 27th, 2025 |
| Days on Market | 14 |
| Zoning | M1 |

Listing Details

| | |
|----------------|-----------------------|
| Listing Office | RE/MAX Grande Prairie |
|----------------|-----------------------|

Data is supplied by Pillar 9â„¢ MLS® System. Pillar 9â„¢ is the owner of the copyright in its MLS® System. Data is deemed reliable but is not guaranteed accurate by Pillar 9â„¢. The trademarks MLS®, Multiple Listing Service® and the associated logos are owned by The Canadian Real Estate Association (CREA) and identify the quality of services provided by real estate professionals who are members of CREA. Used under license.