

# \$86,900 - 92, 812 6th Avenue Sw, Slave Lake

MLS® #A2247038

**\$86,900**

3 Bedroom, 2.00 Bathroom, 1,298 sqft

Mobile on 0.00 Acres

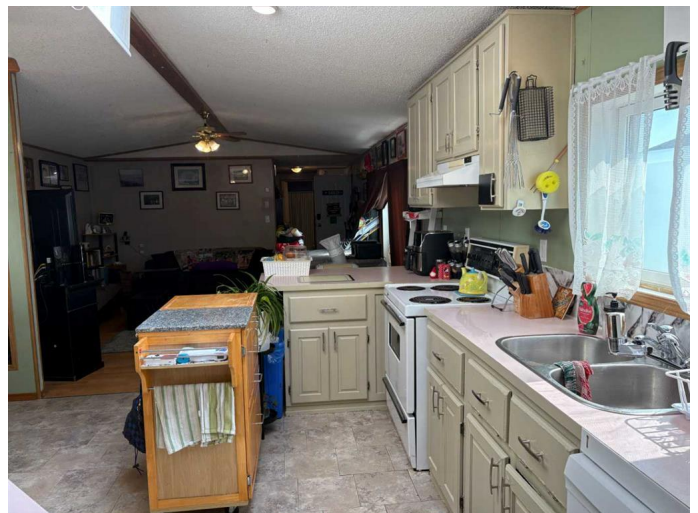
NONE, Slave Lake, Alberta

This well-kept 3 bedroom, 2 full bathroom home offers 1,297 sq. ft. of comfortable living space with a practical addition and a great layout. Located on a rented lot, it features newer laminate and vinyl flooring throughout, a freshly painted back deck, and a fenced yard perfect for enjoying the outdoors. The bedrooms are a generous size, and recent updates include a newer furnace, hot water tank and Industrial grade heat tape on all water and sewer lines - for added peace of mind. With a good-sized yard and plenty of potential to make it your own, this home is ready for its next chapter. **SELLER IS MOTIVATED!**

Built in 1993

## Essential Information

MLS® #	A2247038
Price	\$86,900
Bedrooms	3
Bathrooms	2.00
Full Baths	2
Square Footage	1,298
Acres	0.00
Year Built	1993
Type	Mobile
Sub-Type	Mobile
Style	Single Wide Mobile Home
Status	Active



## Community Information

Address	92, 812 6th Avenue Sw
Subdivision	NONE
City	Slave Lake
County	Lesser Slave River No. 124, M.D. of
Province	Alberta
Postal Code	T0G 2A4

## Amenities

Parking Spaces	2
Parking	Off Street, Parking Pad

## Interior

Appliances	Built-In Refrigerator, Dishwasher, Microwave, Stove(s), Wall/Window Air Conditioner, Washer/Dryer
Heating	Forced Air

## Exterior

Roof	Asphalt Shingle
------	-----------------

## Additional Information

Date Listed	August 8th, 2025
Days on Market	34

## Listing Details

Listing Office	ROYAL LEPAGE PROGRESSIVE REALTY
----------------	---------------------------------

Data is supplied by Pillar 9â„¢ MLS® System. Pillar 9â„¢ is the owner of the copyright in its MLS® System. Data is deemed reliable but is not guaranteed accurate by Pillar 9â„¢. The trademarks MLS®, Multiple Listing Service® and the associated logos are owned by The Canadian Real Estate Association (CREA) and identify the quality of services provided by real estate professionals who are members of CREA. Used under license.