

\$459,000 - 57 Pine Crescent, Blackfalds

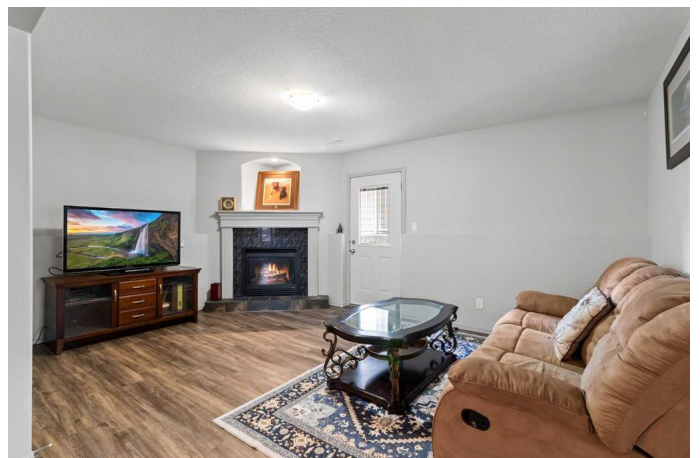
MLS® #A2245017

\$459,000

4 Bedroom, 3.00 Bathroom, 1,098 sqft
Residential on 0.12 Acres

Panorama Estates, Blackfalds, Alberta

Welcome to this stunning 4-bedroom, 3-bathroom home that combines elegance, comfort, and functionality. From the moment you step into the spacious entryway, youâ€™ll be greeted by gleaming natural light, accented by maple hardwood flooring and an abundance of space provided by high ceilings & large living room windows, creating a warm and inviting atmosphere. The heart of the home is the chefâ€™s kitchen, featuring striking light and dark accents, a full tile backsplash, a large corner pantry, and ample cabinet and counter space finished with stainless steel appliances. Enjoy casual meals at the sit-up eating bar or host dinner parties in the formal dining area, with garden doors leading to your oversized deck spaceâ€”perfect for entertaining or relaxing at the end of the day. The expansive master bedroom is a true retreat, complete with a 4-piece ensuite & dual closets the main floor is finished off with a additional bedroom and 4pc. full bath offering space and comfort for family & guests. The fully developed walk-up basement adds exceptional versatility, offering two large bedrooms, a spacious family room with a cozy gas fireplace, and a unique flex space ideal for a home office or games area & 4-piece bath. Comfort is built in with in-floor heat and the convenience of central vacuum rough-ins. Additional features include: Soaring vaulted ceilings, Rich ceramic tile accents, no bi-fold doors, upgraded finishes throughout, and fresh paint in the main floor living space



and dining room area. Numerous dimmer switches for customized lighting, gated RV parking, under-deck storage & separate basement entry. The double attached garage space features shelving storage, a work bench, and out front, a large concrete driveway provides 2 additional parking spots. Located just steps from beautiful parks with playgrounds and minutes from one of Blackfaldsâ€™ largest natural pond areas, this home offers both convenience and natural beauty.

Built in 2005

Essential Information

MLS® #	A2245017
Price	\$459,000
Bedrooms	4
Bathrooms	3.00
Full Baths	3
Square Footage	1,098
Acres	0.12
Year Built	2005
Type	Residential
Sub-Type	Detached
Style	Bi-Level
Status	Active

Community Information

Address	57 Pine Crescent
Subdivision	Panorama Estates
City	Blackfalds
County	Lacombe County
Province	Alberta
Postal Code	T4M 0E2

Amenities

Utilities	Electricity Connected, Natural Gas Connected, Garbage Collection, Sewer Connected, Water Connected, Cable Connected, Phone
-----------	--

	Connected
Parking Spaces	4
Parking	Alley Access, Concrete Driveway, Double Garage Attached, Front Drive, Garage Door Opener, Garage Faces Front, Insulated, Off Street, On Street, Parking Pad, RV Access/Parking, Side By Side, Boat, RV Gated
# of Garages	2

Interior

Interior Features	Built-in Features
Appliances	Dishwasher, Electric Stove, Garage Control(s), Microwave, Microwave Hood Fan, Refrigerator, Washer/Dryer, Window Coverings
Heating	Forced Air, Natural Gas
Cooling	None
Fireplace	Yes
# of Fireplaces	1
Fireplaces	Gas, Blower Fan
Has Basement	Yes
Basement	Exterior Entry, Finished, Full, Walk-Up To Grade

Exterior

Exterior Features	Private Entrance, Private Yard, Storage
Lot Description	Back Yard, Corner Lot, Few Trees, Front Yard, Lawn, Sloped Down, Street Lighting
Roof	Asphalt Shingle
Construction	Wood Frame
Foundation	Poured Concrete

Additional Information

Date Listed	August 8th, 2025
Zoning	R1S

Listing Details

Listing Office	RE/MAX real estate central alberta
----------------	------------------------------------

Data is supplied by Pillar 9â„¢ MLS® System. Pillar 9â„¢ is the owner of the copyright in its MLS® System. Data is deemed reliable but is not guaranteed accurate by Pillar 9â„¢. The trademarks MLS®, Multiple Listing Service® and the associated logos are owned by The Canadian Real Estate Association (CREA) and identify the quality of services provided by real estate professionals who are members of CREA. Used under license.