

\$739,900 - 220, 20 Silverado Crest Park Sw, Calgary

MLS® #A2243342

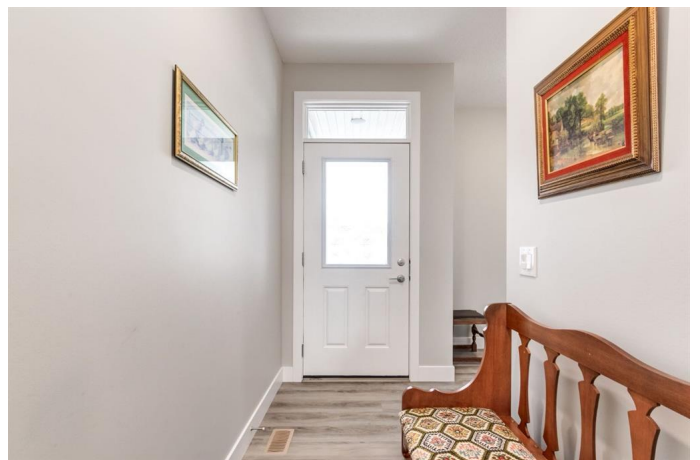
\$739,900

1 Bedroom, 2.00 Bathroom, 1,271 sqft

Residential on 0.08 Acres

Silverado, Calgary, Alberta

Open House Sunday July 27th 1:00-3:00PM
Discover the ease of low maintenance living in this beautifully designed villa-style home, perfectly located in the sought after community of Silverado. Offering 1,271 square feet of thoughtfully planned space, this one bedroom plus den, 1.5 bathroom home is ideal for those looking to downsize without compromising comfort or style. Positioned across from Spruce Meadows, this property offers easy access to an 80 acre nature reserve with paved walking paths, perfect for morning strolls or peaceful evenings outdoors. While youâ€™ll enjoy the serenity of nature at your doorstep, youâ€™re still just minutes from shopping, dining, and everyday conveniences. Inside, the open concept layout creates an inviting space for both relaxing and entertaining. The chef inspired kitchen boasts a spacious centre island, stainless steel appliances, and ample storage, while the cozy living area with its stone feature gas fireplace provides the perfect spot to unwind. The primary suite is a private retreat, complete with a spa like 5 piece ensuite and walk-in closet. A versatile den offers space for a home office, hobby room, or guest area. The unfinished basement provides room for future customization, whether you envision additional living space, a guest suite, or extra storage. Set in a quiet, well connected neighbourhood with easy access to major roadways, this villa offers a perfect blend of convenience and tranquility. If youâ€™re seeking a home that



allows you to simplify your lifestyle without sacrificing quality, this is the one.

Built in 2021

Essential Information

MLS® #	A2243342
Price	\$739,900
Bedrooms	1
Bathrooms	2.00
Full Baths	1
Half Baths	1
Square Footage	1,271
Acres	0.08
Year Built	2021
Type	Residential
Sub-Type	Semi Detached
Style	Side by Side, Villa
Status	Active

Community Information

Address	220, 20 Silverado Crest Park Sw
Subdivision	Silverado
City	Calgary
County	Calgary
Province	Alberta
Postal Code	T2X 4L3

Amenities

Amenities	Snow Removal
Parking Spaces	4
Parking	Double Garage Attached
# of Garages	2

Interior

Interior Features	Breakfast Bar, Double Vanity, High Ceilings, Kitchen Island, Open Floorplan, Quartz Counters, Walk-In Closet(s)
Appliances	Dishwasher, Dryer, Electric Range, Garage Control(s), Microwave, Range Hood, Refrigerator, Washer, Window Coverings

Heating	Fireplace(s), Forced Air
Cooling	None
Fireplace	Yes
# of Fireplaces	1
Fireplaces	Gas
Has Basement	Yes
Basement	Full, Unfinished

Exterior

Exterior Features	Private Yard
Lot Description	Back Yard, Corner Lot, Front Yard, Landscaped, Lawn, Rectangular Lot
Roof	Asphalt Shingle
Construction	Wood Frame
Foundation	Poured Concrete

Additional Information

Date Listed	July 25th, 2025
Days on Market	2
Zoning	R-G
HOA Fees	210
HOA Fees Freq.	ANN

Listing Details

Listing Office	Real Broker
----------------	-------------

Data is supplied by Pillar 9â„¢ MLSÂ® System. Pillar 9â„¢ is the owner of the copyright in its MLSÂ® System. Data is deemed reliable but is not guaranteed accurate by Pillar 9â„¢. The trademarks MLSÂ®, Multiple Listing ServiceÂ® and the associated logos are owned by The Canadian Real Estate Association (CREA) and identify the quality of services provided by real estate professionals who are members of CREA. Used under license.