

# \$134,900 - 626 Willow Bay, Brightsand Lake

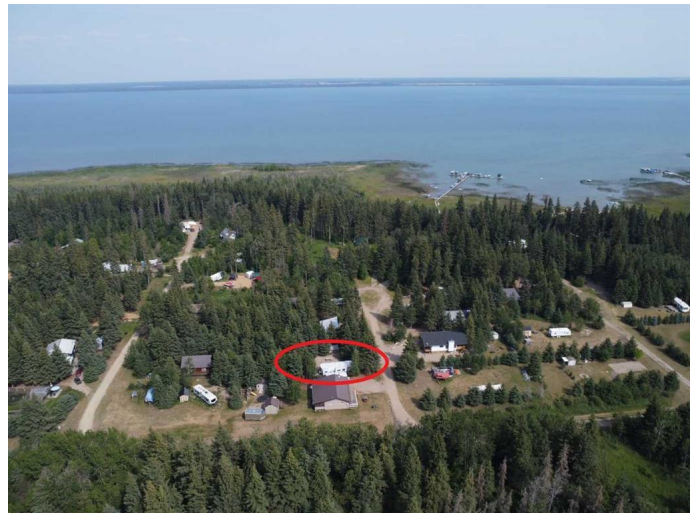
MLS® #A2242832

**\$134,900**

0 Bedroom, 0.00 Bathroom,  
Land on 0.22 Acres

NONE, Brightsand Lake, Saskatchewan

Lake lot with a 40-foot Park Model RV at Brightsand Lake, Saskatchewan. Ready for immediate possession. Lot 626 at Willow Bay measures 70 feet by 135 feet. The lot is fully equipped with a water well, septic system, and ample power. The Park Model trailer has very few miles on it, having been parked at the lake most of the time. It features three slide outs that open to make a bright and roomy interior. The master bedroom offers a comfortable queen bed with plenty of cabinets for storage, plus a TV for relaxing evenings. The 3-piece bathroom is perfect for your convenience. The well-appointed kitchen comes with a full-size fridge, and the dining table conveniently folds into a bed for extra sleeping space. Stay warm on those cooler nights with the cozy living room fireplace. The rear bedroom has bunk beds that are perfect for the kids (or grandkids), plus it has a separate table area for fun and games. The storage shed isn't just a storage shed. It features a washer, dryer, and on-demand hot water system, plus an outdoor shower that is a must have after a day of fun by the lake. The gazebo with a cozy fire pit is the perfect place to relax and enjoy the long evenings and quality time with family and friends under the stars. RVs are allowed with a permit from the Rural Municipality office. Brightsand Lake Regional Park is close by and features a restaurant, golf course, campground, playground, and boat launch. For groceries and gas for the boat, take a quick drive to the town of St. Walburg or



Turtleford. Brightsand Lake is a 90 minute drive north east of Lloydminster, about a 2 & 1/2 hour drive from Saskatoon, and about 3 hours & 45 minutes from Edmonton. Call to view.

### Essential Information

MLS® #	A2242832
Price	\$134,900
Bathrooms	0.00
Acres	0.22
Type	Land
Sub-Type	Residential Land
Status	Active

### Community Information

Address	626 Willow Bay
Subdivision	NONE
City	Brightsand Lake
County	Saskatchewan
Province	Saskatchewan
Postal Code	S0M 0H0

### Additional Information

Date Listed	July 24th, 2025
Days on Market	3
Zoning	Residential

### Listing Details

Listing Office	RE/MAX OF LLOYDMINSTER
----------------	------------------------

Data is supplied by Pillar 9â„¢ MLS® System. Pillar 9â„¢ is the owner of the copyright in its MLS® System. Data is deemed reliable but is not guaranteed accurate by Pillar 9â„¢. The trademarks MLS®, Multiple Listing Service® and the associated logos are owned by The Canadian Real Estate Association (CREA) and identify the quality of services provided by real estate professionals who are members of CREA. Used under license.