

\$89,000 - 517 2 Ave Crescent, Wainwright

MLS® #A2242720

\$89,000

2 Bedroom, 1.00 Bathroom, 1,123 sqft

Residential on 0.13 Acres

Wainwright, Wainwright, Alberta

Don't miss this great opportunity! This 1976 single-wide mobile home with addition offers 3 comfortable bedrooms, a cozy living room, and a spacious eat-in kitchen—perfect for first-time buyers, investors, or downsizers. Situated on a fully owned lot, there's no pad rent to worry about. With plenty of potential and affordable living, this home is ready for your personal touch. Book your showing today!

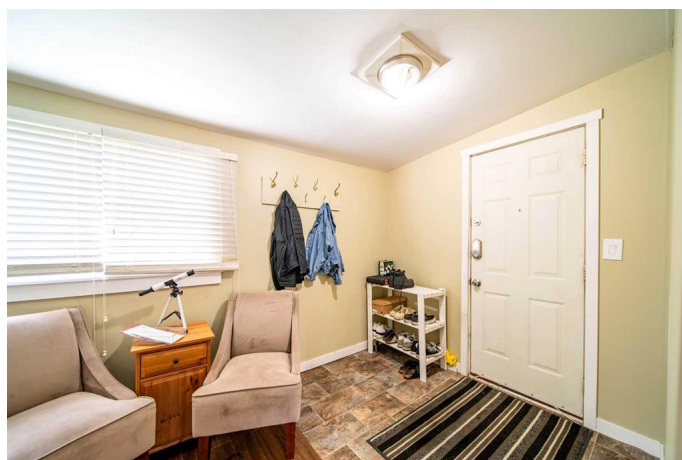
Built in 1976

Essential Information

MLS® #	A2242720
Price	\$89,000
Bedrooms	2
Bathrooms	1.00
Full Baths	1
Square Footage	1,123
Acres	0.13
Year Built	1976
Type	Residential
Sub-Type	Detached
Style	Single Wide Mobile Home
Status	Active

Community Information

Address	517 2 Ave Crescent
Subdivision	Wainwright



City	Wainwright
County	Wainwright No. 61, M.D. of
Province	Alberta
Postal Code	T9W 1A3

Amenities

Parking Spaces	2
Parking	Off Street

Interior

Interior Features	Ceiling Fan(s)
Appliances	Dryer, Electric Stove, Refrigerator, Washer
Heating	Forced Air
Cooling	Central Air
Basement	None

Exterior

Exterior Features	Rain Gutters
Lot Description	Back Yard, Cul-De-Sac, Landscaped, Lawn
Roof	Asphalt Shingle
Construction	Wood Frame
Foundation	None

Additional Information

Date Listed	July 24th, 2025
Days on Market	49
Zoning	RMH-1

Listing Details

Listing Office	CENTURY 21 CONNECT REALTY
----------------	---------------------------

Data is supplied by Pillar 9â„¢ MLSÂ® System. Pillar 9â„¢ is the owner of the copyright in its MLSÂ® System. Data is deemed reliable but is not guaranteed accurate by Pillar 9â„¢. The trademarks MLSÂ®, Multiple Listing ServiceÂ® and the associated logos are owned by The Canadian Real Estate Association (CREA) and identify the quality of services provided by real estate professionals who are members of CREA. Used under license.