

\$398,888 - 78, 80 Galbraith Drive Sw, Calgary

MLS® #A2242645

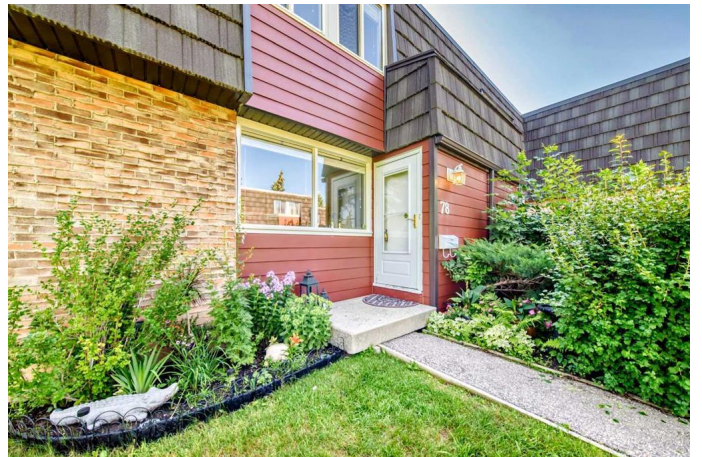
\$398,888

3 Bedroom, 2.00 Bathroom, 1,172 sqft

Residential on 0.00 Acres

Glamorgan, Calgary, Alberta

Welcome to Glenmore on the Parc, a well-maintained complex, where you will find unit #78, an updated end-unit townhome right next to the park offering over 1,500 sq ft of updated living space, with 3 bedrooms, 1.5 bathrooms, and a fully developed basement. This home backs directly onto Galbraith Park and is within walking distance to Mount Royal University, schools, transit, and endless amenities. Step inside to a sunny main floor where newer flooring flows through the living room, dining room, and kitchen. A large window fills the kitchen space with natural light, while the updated trendy kitchen features refreshed white cabinetry, appealing backsplash, and a full stainless steel appliance package. A convenient 2 piece bathroom and access to your private, fully enclosed backyard sanctuary make the main level ideal for everyday living. Upstairs, you'll find 3 spacious bedrooms, including a large primary bedroom with spacious walk in closet. Rounding out the top level you will find a 4 piece bathroom with soaker tub. The fully finished basement offers even more value, with a large recreation room, storage and laundry. The corner unit lot offers plenty of privacy and is surrounded by lush grass & landscaping "maintained by the condo board! Additional features include an assigned parking stall, close proximity to green space, playgrounds, and walking paths. Whether you're a first-time buyer, young professional, or investor, this move-in-ready home offers



unbeatable value and prime location within the complex, and the City! Donâ€™t miss this rare opportunity, book your showing today!

Built in 1971

Essential Information

| | |
|----------------|---------------|
| MLS® # | A2242645 |
| Price | \$398,888 |
| Bedrooms | 3 |
| Bathrooms | 2.00 |
| Full Baths | 1 |
| Half Baths | 1 |
| Square Footage | 1,172 |
| Acres | 0.00 |
| Year Built | 1971 |
| Type | Residential |
| Sub-Type | Row/Townhouse |
| Style | 2 Storey |
| Status | Active |

Community Information

| | |
|-------------|---------------------------|
| Address | 78, 80 Galbraith Drive Sw |
| Subdivision | Glamorgan |
| City | Calgary |
| County | Calgary |
| Province | Alberta |
| Postal Code | T3E 4Z6 |

Amenities

| | |
|----------------|--|
| Amenities | Park, Parking, Playground, Visitor Parking |
| Parking Spaces | 1 |
| Parking | Stall |

Interior

| | |
|-------------------|--|
| Interior Features | Built-in Features, Ceiling Fan(s), Closet Organizers, Storage, Walk-In Closet(s) |
| Appliances | Dishwasher, Dryer, Microwave, Range Hood, Refrigerator, Stove(s), Washer |

| | |
|--------------|----------------|
| Heating | Forced Air |
| Cooling | None |
| Has Basement | Yes |
| Basement | Finished, Full |

Exterior

| | |
|-------------------|---|
| Exterior Features | Lighting, Other, Private Yard, Storage, Courtyard |
| Lot Description | Corner Lot, Low Maintenance Landscape, Other |
| Roof | Tar/Gravel |
| Construction | Brick, Vinyl Siding, Wood Frame |
| Foundation | Poured Concrete |

Additional Information

| | |
|----------------|-----------------|
| Date Listed | July 30th, 2025 |
| Days on Market | 10 |
| Zoning | M-C1 d54 |

Listing Details

| | |
|----------------|------------|
| Listing Office | eXp Realty |
|----------------|------------|

Data is supplied by Pillar 9â„¢ MLS® System. Pillar 9â„¢ is the owner of the copyright in its MLS® System. Data is deemed reliable but is not guaranteed accurate by Pillar 9â„¢. The trademarks MLS®, Multiple Listing Service® and the associated logos are owned by The Canadian Real Estate Association (CREA) and identify the quality of services provided by real estate professionals who are members of CREA. Used under license.