

\$144,900 - 2102, 7201 Poplar Drive, Grande Prairie

MLS® #A2242438

\$144,900

2 Bedroom, 1.00 Bathroom, 1,019 sqft

Residential on 0.00 Acres

South Patterson Place, Grande Prairie, Alberta

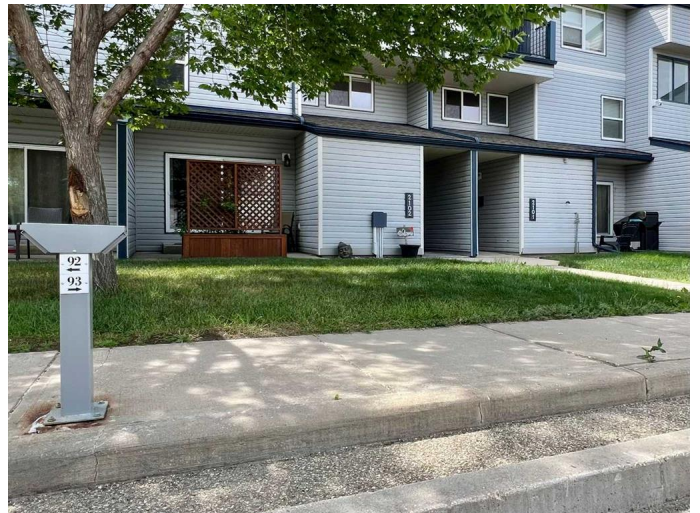
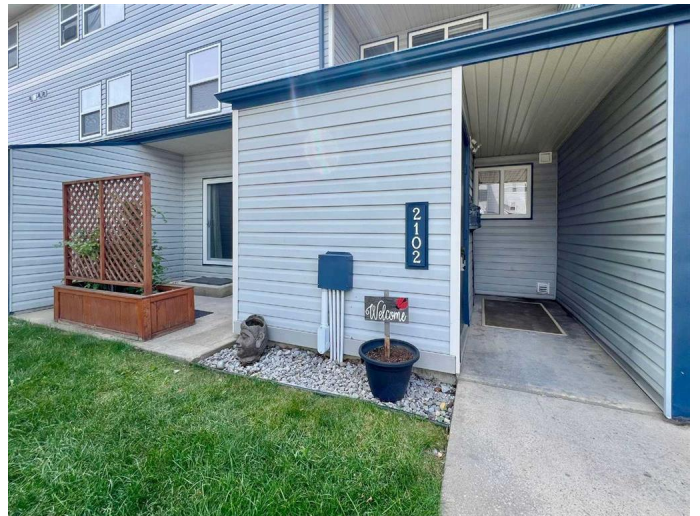
Welcome to this thoughtfully updated 2 bed, 1 bath ground-floor unit in the desirable Haywood Court. Offering both functionality and style, this two-storey layout provides a spacious and comfortable place to call home - and with immediate possession available, you can move in and start enjoying right away!

Step inside to find a freshly painted interior with popcorn ceilings scraped for a modern, clean feel. The inviting entryway features a custom bench and feature wall, adding both character and practical storage. The bright and open living room flows seamlessly into a galley-style kitchen, complete with ample cabinetry and updated appliances over the years.

Just off the dining area, youâ€™ll find a large walk-in storage room, perfect for pantry items, gear, or seasonal storage. Step outside from the living room to your own private patio with a garden box and privacy wall, ideal for summer lounging or your morning coffee.

Upstairs, discover two well-sized bedrooms, including a spacious primary, and a full 4-piece bathroom. This unit also includes a locked exterior storage room and one powered parking stall located right out front for added convenience.

Condo fees of \$534.50/month cover heat, water, garbage, and exterior maintenance â€”



you only pay electricity, making this a low-maintenance and affordable ownership opportunity.

Whether youâ€™re a first-time home buyer, investor, or looking to downsize, this unit checks all the boxes â€” and itâ€™s ready whenever you are.

Built in 1981

Essential Information

MLS® #	A2242438
Price	\$144,900
Bedrooms	2
Bathrooms	1.00
Full Baths	1
Square Footage	1,019
Acres	0.00
Year Built	1981
Type	Residential
Sub-Type	Apartment
Style	Multi Level Unit
Status	Active

Community Information

Address	2102, 7201 Poplar Drive
Subdivision	South Patterson Place
City	Grande Prairie
County	Grande Prairie
Province	Alberta
Postal Code	T8V 6C5

Amenities

Amenities	Trash
Parking Spaces	1
Parking	Stall

Interior

Interior Features	Built-in Features
Appliances	Dishwasher, Dryer, Electric S
Heating	Baseboard
Cooling	None
# of Stories	4

Exterior

Exterior Features	None
Construction	Vinyl Siding

Additional Information

Date Listed	July 24th, 2025
Days on Market	3
Zoning	RM

Listing Details

Listing Office	Sutton Group Grande Prairie Pr
----------------	--------------------------------



Data is supplied by Pillar 9â„¢ MLSÂ® System. Pillar 9â„¢ is the owner of the copyright in its MLSÂ® System. Data is deemed reliable but is not guaranteed accurate by Pillar 9â„¢. The trademarks MLSÂ®, Multiple Listing ServiceÂ® and the associated logos are owned by The Canadian Real Estate Association (CREA) and identify the quality of services provided by real estate professionals who are members of CREA. Used under license.