

\$214,900 - 302, 638 Meredith Road Ne, Calgary

MLS® #A2240861

\$214,900

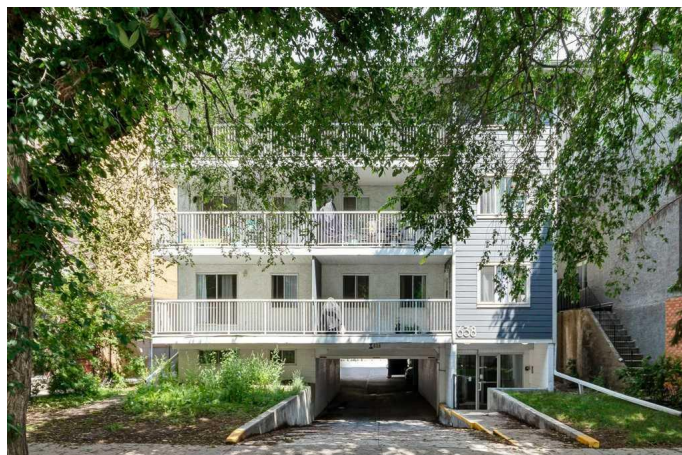
2 Bedroom, 1.00 Bathroom, 828 sqft

Residential on 0.00 Acres

Bridgeland/Riverside, Calgary, Alberta

Welcome to the heart of Bridgeland! This top-floor 2-bedroom condo with an assigned parking spot offers the perfect balance of comfort, convenience, and charm. The open-concept layout features a functional kitchen with a breakfast bar and ample cabinetry, opening into a bright and spacious living room with plenty of room to relax or entertain.

Both bedrooms are generously sized, with mirrored closets and built-in organizers to maximize storage. One includes elegant French doors that add architectural interest while still functioning perfectly as a full second bedroom, whether for guests, family, or a roommate. The 4-piece bathroom includes a deep soaking tub for relaxing evenings at home. Enjoy the ease of in-suite laundry, and take in the view from your oversized, covered balcony (perfect for lounging or entertaining!). Living in Bridgeland means being part of one of Calgary's most vibrant inner-city communities. Known for its tree-lined streets, friendly atmosphere, and walkability, Bridgeland offers an eclectic mix of local cafes, restaurants, and boutique shops. Many of which are just minutes from your front door. You're also just steps away from the Bow River pathway system, ideal for cycling or morning jogs, and within walking distance to the C-Train. You also have easy access to Memorial Drive and downtown. Whether you're heading out for an espresso at a neighborhood cafe or catching a game in the city core, this



location connects you to it all.
Donâ€™t miss this opportunity to live in one of
Calgaryâ€™s most vibrant, walkable
communities; book your showing today!

Built in 1978

Essential Information

MLS® #	A2240861
Price	\$214,900
Bedrooms	2
Bathrooms	1.00
Full Baths	1
Square Footage	828
Acres	0.00
Year Built	1978
Type	Residential
Sub-Type	Apartment
Style	Single Level Unit
Status	Active

Community Information

Address	302, 638 Meredith Road Ne
Subdivision	Bridgeland/Riverside
City	Calgary
County	Calgary
Province	Alberta
Postal Code	T2E5A8

Amenities

Amenities	Bicycle Storage, Parking
Parking Spaces	1
Parking	Stall, Covered

Interior

Interior Features	Breakfast Bar, Closet Organizers, Open Floorplan, Recessed Lighting, Soaking Tub, French Door
Appliances	Dishwasher, Refrigerator, Stove(s), Washer/Dryer
Heating	Baseboard

Cooling	None
# of Stories	4

Exterior

Exterior Features	Balcony
Construction	Stucco, Wood Frame

Additional Information

Date Listed	July 18th, 2025
Days on Market	55
Zoning	M-C2

Listing Details

Listing Office	Coldwell Banker Mountain Central
----------------	----------------------------------

Data is supplied by Pillar 9â„¢ MLS® System. Pillar 9â„¢ is the owner of the copyright in its MLS® System. Data is deemed reliable but is not guaranteed accurate by Pillar 9â„¢. The trademarks MLS®, Multiple Listing Service® and the associated logos are owned by The Canadian Real Estate Association (CREA) and identify the quality of services provided by real estate professionals who are members of CREA. Used under license.