

\$25,000 - 4325 48 Avenue, Castor

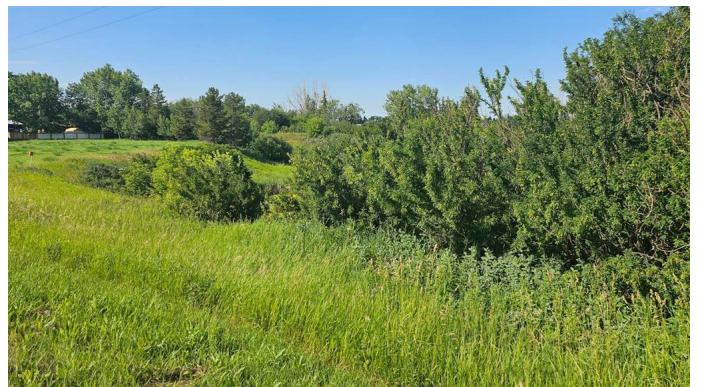
MLS® #A2240471

\$25,000

0 Bedroom, 0.00 Bathroom,
Land on 0.98 Acres

NONE, Castor, Alberta

Looking for highway property near the main entrance of Castor? Well here it is, located on the north side of highway 12 and is directly across from the local motel. The town creek goes through the property, with approximately 20 feet of land on the east side. This property may be ideal for the investor needing some land in Castor for either a commercial build or a residential build. No utilities on property. Frontage is 330 ft by depth of 130 ft. Zoned Highway Commercial. Seller will not finance buyer.



Essential Information

| | |
|-----------|-----------------|
| MLS® # | A2240471 |
| Price | \$25,000 |
| Bathrooms | 0.00 |
| Acres | 0.98 |
| Type | Land |
| Sub-Type | Commercial Land |
| Status | Active |

Community Information

| | |
|-------------|------------------------------|
| Address | 4325 48 Avenue |
| Subdivision | NONE |
| City | Castor |
| County | Paintearth No. 18, County of |
| Province | Alberta |
| Postal Code | T0C0X0 |

Additional Information

| | |
|----------------|-----------------|
| Date Listed | July 16th, 2025 |
| Days on Market | 104 |
| Zoning | HWY-C |

Listing Details

| | |
|----------------|------------------------|
| Listing Office | Sutton Landmark Realty |
|----------------|------------------------|

Data is supplied by Pillar 9â„¸ MLSÂ® System. Pillar 9â„¸ is the owner of the copyright in its MLSÂ® System. Data is deemed reliable but is not guaranteed accurate by Pillar 9â„¸. The trademarks MLSÂ®, Multiple Listing ServiceÂ® and the associated logos are owned by The Canadian Real Estate Association (CREA) and identify the quality of services provided by real estate professionals who are members of CREA. Used under license.