

# \$785,000 - 14416 Parkside Drive Se, Calgary

MLS® #A2238969

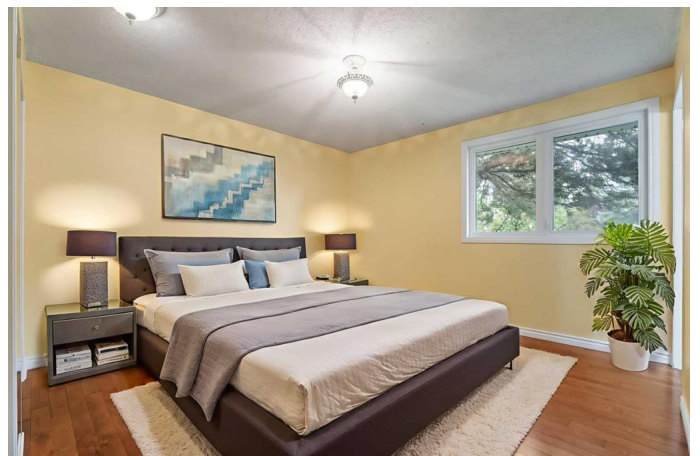
**\$785,000**

4 Bedroom, 3.00 Bathroom, 1,259 sqft

Residential on 0.15 Acres

Parkland, Calgary, Alberta

Welcome to 14416 Parkside Drive, a beautifully finished detached bungalow in the heart of Parkland, one of Calgary's most desirable family communities. This spacious 4-bedroom plus den, 3-bathroom home with a double detached garage with heat and dedicated internet line. This home offers the perfect blend of comfort, style, and community amenities. Step inside and you'll find a bright, open-concept living area centered around a cozy gas-assist wood-burning fireplace, creating a warm and inviting space for relaxing evenings or entertaining friends and family. The large kitchen is a chef's delight, featuring updated stone countertops and a large window overlooking your private yard ideal for watching the kids play or enjoying your morning coffee. The main floor features three generously sized bedrooms, including a primary complete with a private 3-piece ensuite. The fully finished basement expands your living space with a large rec room boasting another wood-burning fireplace, a fourth bedroom, and a versatile den that's perfect for a home office or hobby room. Enjoy the outdoors in your expansive backyard, perfect for family gatherings, gardening, or simply unwinding in your own peaceful oasis. Beyond your doorstep, you're just steps away from the endless walking and biking trails of Fish Creek Park, offering year-round opportunities for outdoor recreation and connection with nature. Parkland is renowned for its quiet, tree-lined



streets, strong sense of community, and access to top-rated schoolsâ€”making it a favorite for families. As a resident, youâ€™ll also enjoy exclusive membership to Park 96, the communityâ€™s private park featuring tennis courts, disc golf, skating rinks, playgrounds, and frequent family-friendly events. With quick access to shopping, dining, and major roadways, all the essentials are within easy reach while you enjoy the tranquility of suburban living. Experience the best of Parklandâ€”where community spirit, nature, and comfort come together. Book your private showing with your favorite agent today and make 14416 Parkside Drive your new home!

Built in 1975

**Essential Information**

MLS® #	A2238969
Price	\$785,000
Bedrooms	4
Bathrooms	3.00
Full Baths	3
Square Footage	1,259
Acres	0.15
Year Built	1975
Type	Residential
Sub-Type	Detached
Style	Bungalow
Status	Active

**Community Information**

Address	14416 Parkside Drive Se
Subdivision	Parkland
City	Calgary
County	Calgary
Province	Alberta
Postal Code	T2J 4J7

## Amenities

Amenities	Park, Recreation Facilities
Parking Spaces	2
Parking	Double Garage Detached, Insulated, Alley Access, Garage Faces Rear
# of Garages	2

## Interior

Interior Features	Ceiling Fan(s), No Animal Home, No Smoking Home, Stone Counters, Storage, Vinyl Windows
Appliances	Dryer, Refrigerator, Stove(s), Washer
Heating	Fireplace(s), Forced Air, Natural Gas, Wood
Cooling	None
Fireplace	Yes
# of Fireplaces	2
Fireplaces	Living Room, Mantle, Raised Hearth, Wood Burning, Basement, Gas Starter, Recreation Room, Stone
Has Basement	Yes
Basement	Finished, Full

## Exterior

Exterior Features	Private Yard
Lot Description	Back Lane, Back Yard, Fruit Trees/Shrub(s), Irregular Lot, Treed
Roof	Asphalt Shingle
Construction	Vinyl Siding, Wood Frame
Foundation	Poured Concrete

## Additional Information

Date Listed	July 11th, 2025
Days on Market	4
Zoning	R-CG
HOA Fees	200
HOA Fees Freq.	ANN

## Listing Details

Listing Office	CIR Realty
----------------	------------

Data is supplied by Pillar 9â„¢ MLS® System. Pillar 9â„¢ is the owner of the copyright in its MLS® System. Data is deemed reliable but is not guaranteed accurate by Pillar 9â„¢. The trademarks MLS®, Multiple Listing Service® and the associated logos are owned by The Canadian Real Estate Association (CREA) and identify the quality of services provided by real estate professionals who are members of CREA. Used under license.