

\$524,900 - 571 Firelight Place W, Lethbridge

MLS® #A2233455

\$524,900

4 Bedroom, 4.00 Bathroom, 1,800 sqft

Residential on 0.10 Acres

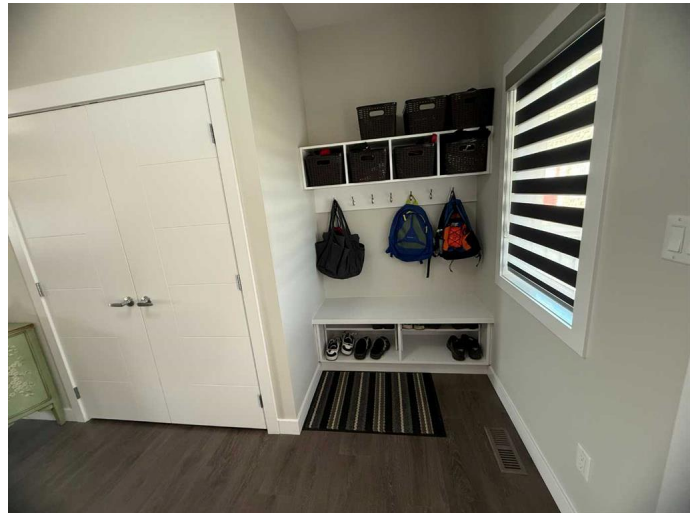
Copperwood, Lethbridge, Alberta

A gorgeous open concept 2 Story home located on a quiet road in Copperwood. Features 4 bedrooms, 3 1/2 bathrooms, a large kitchen with quartz counters, generous sized island and coffee bar with a mini fridge, Primary bedroom with a 4 piece ensuite and huge walk-in closet with custom shelving, 2 electric fireplaces, built in cabinets, fully developed basement with a family room and wet bar, bedroom with a cheater ensuite door, central air, heated garage, 2 sheds, fully fenced and landscaped yard and much more. Was changed from a 4 bedroom up, to a 3 bedroom up, but could very easily be changed back if desired with the installation of a wall making it a total of 5 bedrooms.

Built in 2017

Essential Information

| | |
|----------------|-------------|
| MLS® # | A2233455 |
| Price | \$524,900 |
| Bedrooms | 4 |
| Bathrooms | 4.00 |
| Full Baths | 3 |
| Half Baths | 1 |
| Square Footage | 1,800 |
| Acres | 0.10 |
| Year Built | 2017 |
| Type | Residential |
| Sub-Type | Detached |



| | |
|--------|----------|
| Style | 2 Storey |
| Status | Active |

Community Information

| | |
|-------------|-----------------------|
| Address | 571 Firelight Place W |
| Subdivision | Copperwood |
| City | Lethbridge |
| County | Lethbridge |
| Province | Alberta |
| Postal Code | T1J0B8 |

Amenities

| | |
|----------------|---|
| Parking Spaces | 4 |
| Parking | Double Garage Attached, Heated Garage, Off Street |
| # of Garages | 2 |

Interior

| | |
|-------------------|--|
| Interior Features | Breakfast Bar, Kitchen Island, Open Floorplan, See Remarks |
| Appliances | See Remarks |
| Heating | Forced Air |
| Cooling | Central Air |
| Fireplace | Yes |
| # of Fireplaces | 2 |
| Fireplaces | Electric |
| Has Basement | Yes |
| Basement | Finished, Full |

Exterior

| | |
|-------------------|---|
| Exterior Features | Private Yard |
| Lot Description | Back Lane, Back Yard, Landscaped, See Remarks |
| Roof | Asphalt Shingle |
| Construction | Mixed |
| Foundation | Poured Concrete |

Additional Information

| | |
|----------------|-----------------|
| Date Listed | June 24th, 2025 |
| Days on Market | 6 |
| Zoning | R-CL |

Listing Details

Listing Office

SUTTON GROUP - LETHBRIDGE

Data is supplied by Pillar 9â„¢ MLSÂ® System. Pillar 9â„¢ is the owner of the copyright in its MLSÂ® System. Data is deemed reliable but is not guaranteed accurate by Pillar 9â„¢. The trademarks MLSÂ®, Multiple Listing ServiceÂ® and the associated logos are owned by The Canadian Real Estate Association (CREA) and identify the quality of services provided by real estate professionals who are members of CREA. Used under license.