

\$486,000 - 362 Lettice Perry Road N, Lethbridge

MLS® #A2230476

\$486,000

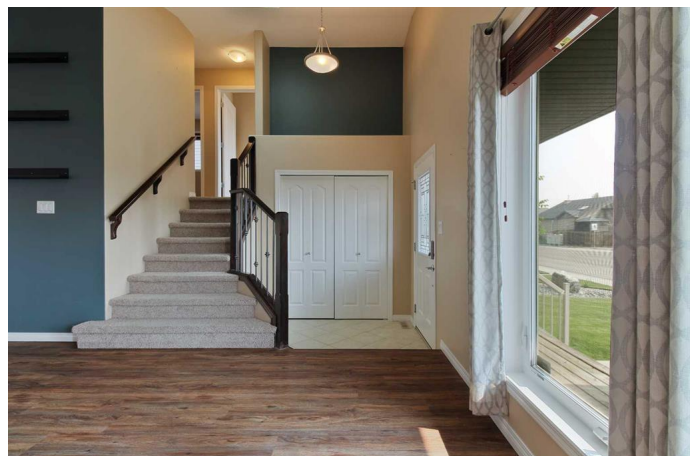
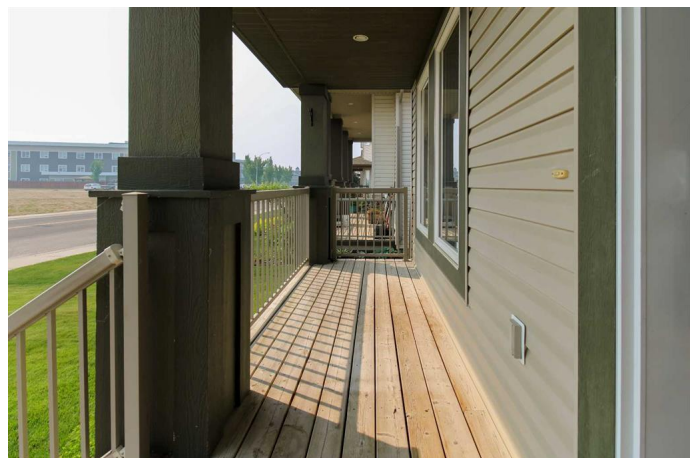
4 Bedroom, 3.00 Bathroom, 1,241 sqft

Residential on 0.11 Acres

Legacy Ridge / Hardieville, Lethbridge, Alberta

Welcome to this beautifully maintained 4-level split in Legacy Ridge. Offering a functional layout with thoughtful updates, this home is perfect for families or anyone needing extra space. With recent improvements like new flooring and granite kitchen counters, it's move-in ready! Step inside and be greeted by an inviting main floor filled with natural light. The spacious living and dining areas flow seamlessly into the U-shaped kitchen featuring a handy pantry, and lots of counter space perfect for everyday living. Upstairs, you'll find 3 generous bedrooms and two full bathrooms, including a primary suite with a walk-in closet and private en-suite. The third level is a standout feature, boasting a bright walkout to the backyard, complete with a cozy gas fireplace, full bathroom, laundry room, and the fourth bedroom, perfect for guests or a home office setup. The unfinished fourth level offers incredible potential, use it as a media room, playroom, or even a fifth bedroom and additional family space. Outside, the private backyard is your summer oasis with a gazebo and underground sprinklers set in a beautifully landscaped yard. Plus, there's RV parking with convenient alley access as the alleys come to a 'T' right in front of the parking pad. The 24'x24' garage is fully wired with 220 amp service and a gas line is in the ground ready for a future heater. Don't miss your chance to own this move-in ready home with tons of storage and room to grow.

Message your favourite REALTOR® to view



today!

Built in 2009

Essential Information

MLS® #	A2230476
Price	\$486,000
Bedrooms	4
Bathrooms	3.00
Full Baths	3
Square Footage	1,241
Acres	0.11
Year Built	2009
Type	Residential
Sub-Type	Detached
Style	4 Level Split
Status	Active

Community Information

Address	362 Lettice Perry Road N
Subdivision	Legacy Ridge / Hardieville
City	Lethbridge
County	Lethbridge
Province	Alberta
Postal Code	T1H 5R5

Amenities

Parking Spaces	2
Parking	Double Garage Detached
# of Garages	2

Interior

Interior Features	Granite Counters, No Smoking Home, Pantry
Appliances	Dishwasher, Microwave, Refrigerator, Oven
Heating	Forced Air
Cooling	Central Air
Fireplace	Yes
# of Fireplaces	1

Fireplaces	Family Room, Gas
Has Basement	Yes
Basement	Full, Partially Finished

Exterior

Exterior Features	Private Yard
Lot Description	Back Lane, Back Yard, Front Yard, Interior Lot, Landscaped, Lawn, Street Lighting
Roof	Asphalt Shingle
Construction	Concrete, Vinyl Siding, Wood Frame
Foundation	Poured Concrete

Additional Information

Date Listed	June 13th, 2025
Days on Market	3
Zoning	R-SL

Listing Details

Listing Office	Onyx Realty Ltd.
----------------	------------------

Data is supplied by Pillar 9â„¢ MLS® System. Pillar 9â„¢ is the owner of the copyright in its MLS® System. Data is deemed reliable but is not guaranteed accurate by Pillar 9â„¢. The trademarks MLS®, Multiple Listing Service® and the associated logos are owned by The Canadian Real Estate Association (CREA) and identify the quality of services provided by real estate professionals who are members of CREA. Used under license.