

\$875,000 - 20 Mapleburn Drive Se, Calgary

MLS® #A2230399

\$875,000

4 Bedroom, 3.00 Bathroom, 1,370 sqft

Residential on 0.11 Acres

Maple Ridge, Calgary, Alberta

OPEN HOUSE SAT JUNE 14 & SUN JUNE 15

2PM- 4PM Spacious 1370 sq ft above grade

Bungalow w/ Fully Developed Basement &

Oversized Garage! Nestled in Calgary's

highly coveted Mapleridge neighborhood, this

expansive bungalow offers the ultimate family

sanctuary. Bathed in natural light and

designed for effortless living, this home blends

spacious elegance with functional charm.

Family Friendly Layout. Open-Concept Living

with an abundance of windows creating a

bright, airy atmosphere perfect for daily life

and grand gatherings. Massive chef-ready

open kitchen flows seamlessly into a spacious

dining area – ideal for hosting dinners or

casual brunches. Luxurious Primary Suite-

Retreat to a huge master bedroom with a

walk-in closet and a serene full ensuite. Two

additional well-sized bedrooms and a full

bathroom complete the main floor. Fully

finished basement & separate entry.

Transform the generous flex room into a home

theater, teen hangout, games lounge, or

private guest suite! Features a large living

area, bedroom, full bath, and utility room –

perfect for multi-generational living or income

potential. Manicured backyard with a large

deck sets the stage for summer BBQs, garden

parties, and tranquil mornings. Oversized

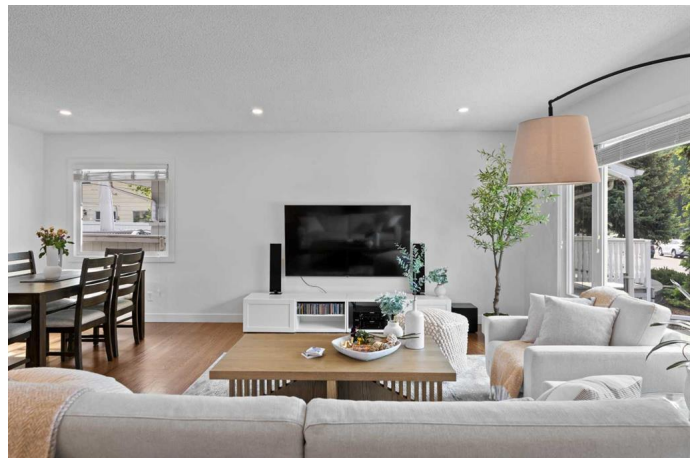
double detached garage (26'x22')

accommodates trucks, toys, and storage with

ease. Peaceful, family-oriented community.

Top-rated schools, parks, and amenities

nearby. Quick access to major routes,



shopping & downtown. A rare blend of space, location, and move-in readiness. Perfect for growing families, entertainers, or savvy investors. **Book your exclusive showing TODAY before this opportunity slips away!**

Built in 1967

Essential Information

MLS® #	A2230399
Price	\$875,000
Bedrooms	4
Bathrooms	3.00
Full Baths	3
Square Footage	1,370
Acres	0.11
Year Built	1967
Type	Residential
Sub-Type	Detached
Style	Bungalow
Status	Active

Community Information

Address	20 Mapleburn Drive Se
Subdivision	Maple Ridge
City	Calgary
County	Calgary
Province	Alberta
Postal Code	T2J 1Y4

Amenities

Parking Spaces	2
Parking	Double Garage Detached
# of Garages	2

Interior

Interior Features	Closet Organizers, Kitchen Island, No Animal Home, No Smoking Home, Open Floorplan, Separate Entrance
Appliances	Dishwasher, Dryer, Electric Cooktop, Garage Control(s), Oven-Built-In,

	Refrigerator, See Remarks, Washer, Window Coverings
Heating	Forced Air, Natural Gas
Cooling	None
Fireplace	Yes
# of Fireplaces	1
Fireplaces	Wood Burning
Has Basement	Yes
Basement	Exterior Entry, Finished, Full

Exterior

Exterior Features	Private Yard
Lot Description	Back Lane, Back Yard
Roof	Asphalt Shingle
Construction	Wood Frame, Wood Siding
Foundation	Poured Concrete

Additional Information

Date Listed	June 12th, 2025
Days on Market	2
Zoning	R-CG

Listing Details

Listing Office	Century 21 Bravo Realty
----------------	-------------------------

Data is supplied by Pillar 9â„¢ MLSÂ® System. Pillar 9â„¢ is the owner of the copyright in its MLSÂ® System. Data is deemed reliable but is not guaranteed accurate by Pillar 9â„¢. The trademarks MLSÂ®, Multiple Listing ServiceÂ® and the associated logos are owned by The Canadian Real Estate Association (CREA) and identify the quality of services provided by real estate professionals who are members of CREA. Used under license.