

\$749,000 - 68 Martha's Haven Gardens Ne, Calgary

MLS® #A2230398

\$749,000

4 Bedroom, 3.00 Bathroom, 1,342 sqft

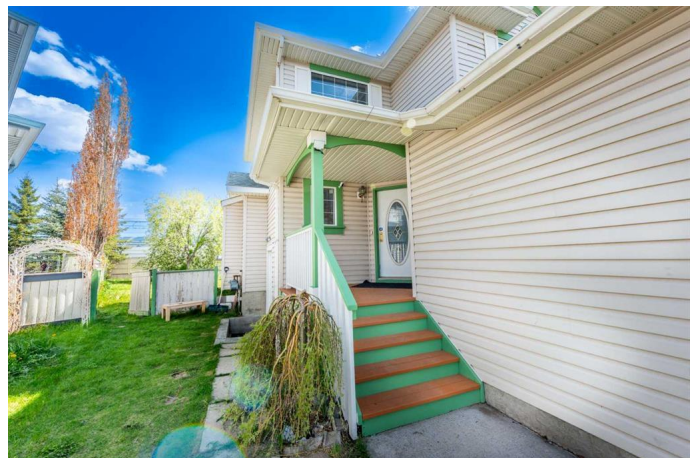
Residential on 0.11 Acres

Martindale, Calgary, Alberta

Welcome to this beautifully maintained two-story home, perfectly situated in a quiet cul-de-sac and directly facing a serene playground—an ideal setting for families! This home boasts a prime location, just: 5 minutes' walk to Crossing Park School 3 minutes' walk to the C-Train LRT station Step inside to a warm and inviting family room with a cozy fireplace, perfect for relaxing evenings. The spacious kitchen features a functional island, elegant white cabinetry, and a bright bay window in the dining area that fills the space with natural light. Beautiful oak railings add timeless charm throughout. Enjoy outdoor living on a large pie-shaped lot with a deck and patio, ideal for entertaining and relaxing in the southwest-facing backyard—fully fenced and landscaped for privacy and comfort. Additional features include: A fully insulated double attached garage A legally developed 1-bedroom basement suite, ideal for rental income or extended family use This move-in ready home combines comfort, functionality, and unbeatable convenience—don't miss your opportunity to own in this sought-after location!

Built in 1998

Essential Information



MLS® #	A2230398
Price	\$749,000
Bedrooms	4
Bathrooms	3.00
Full Baths	2
Half Baths	1
Square Footage	1,342
Acres	0.11
Year Built	1998
Type	Residential
Sub-Type	Detached
Style	2 Storey
Status	Active

Community Information

Address	68 Martha's Haven Gardens Ne
Subdivision	Martindale
City	Calgary
County	Calgary
Province	Alberta
Postal Code	T3J 3W1

Amenities

Parking Spaces	4
Parking	Double Garage Attached
# of Garages	2

Interior

Interior Features	Pantry, Storage, Walk-In Closet(s)
Appliances	Dishwasher, Electric Stove, Garage Control(s), Microwave, Refrigerator, Washer, Other
Heating	Forced Air
Cooling	Other
Fireplace	Yes
# of Fireplaces	1
Fireplaces	Gas
Has Basement	Yes
Basement	Finished, Full, Suite

Exterior

Exterior Features	Garden, Other
Lot Description	Pie Shaped Lot
Roof	Asphalt Shingle
Construction	Concrete, Vinyl Siding
Foundation	Poured Concrete

Additional Information

Date Listed	June 11th, 2025
Days on Market	1
Zoning	R-C1N

Listing Details

Listing Office	AVS Realty Inc.
----------------	-----------------

Data is supplied by Pillar 9â„¢ MLS® System. Pillar 9â„¢ is the owner of the copyright in its MLS® System. Data is deemed reliable but is not guaranteed accurate by Pillar 9â„¢. The trademarks MLS®, Multiple Listing Service® and the associated logos are owned by The Canadian Real Estate Association (CREA) and identify the quality of services provided by real estate professionals who are members of CREA. Used under license.