

# \$449,900 - 487 Mt Sundance Landing W, Lethbridge

MLS® #A2230025

**\$449,900**

4 Bedroom, 4.00 Bathroom, 1,369 sqft

Residential on 0.09 Acres

Sunridge, Lethbridge, Alberta

This well-maintained home offers just under 2,000 sq ft of developed living space, with 4 bedrooms, 3.5 bathrooms, and a layout that blends comfort, function, and style. Located in a quiet cul-de-sac with alley access, it's a home that checks all the boxes.

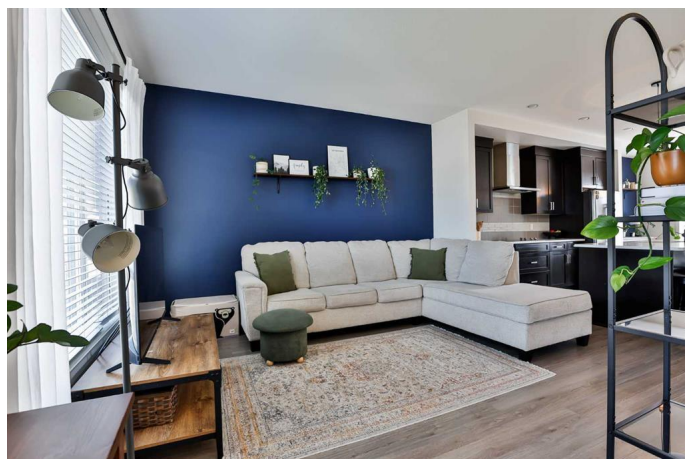
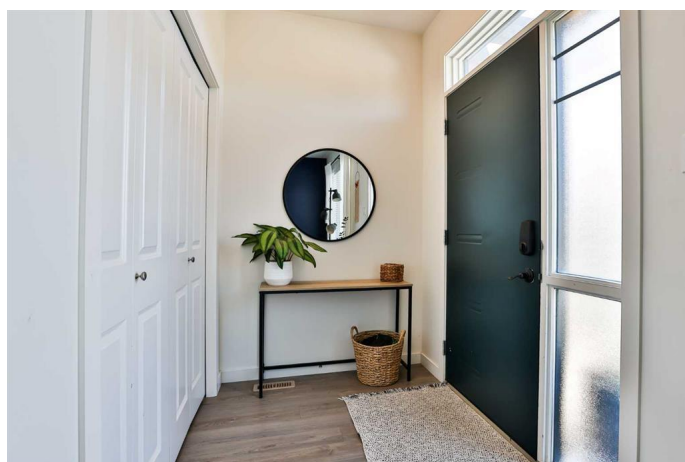
The open-concept main floor is ideal for everyday living and entertaining, featuring a beautiful kitchen with quartz countertops, a cooktop, built-in oven, microwave, and plenty of counter space—designed with both functionality and style in mind.

Upstairs, the primary suite offers a true retreat with a spa-like ensuite that includes a soaker tub—perfect for unwinding at the end of the day. You'll also find upper-level laundry and a convenient desk nook for extra organization.

The fully finished basement provides even more room to spread out with a large family or rec space, a fourth bedroom, and a full bathroom—flexible for whatever you need.

Outside, the yard is landscaped and fenced, and the double parking pad offers plenty of off-street parking. Central A/C is already installed, just in time for those hot summer days.

Close to schools, parks, and westside amenities, this home is move-in ready and has



everything youâ€™ve been looking for. Be sure to check out the photos and virtual tour!

Built in 2015

**Essential Information**

MLS® #	A2230025
Price	\$449,900
Bedrooms	4
Bathrooms	4.00
Full Baths	3
Half Baths	1
Square Footage	1,369
Acres	0.09
Year Built	2015
Type	Residential
Sub-Type	Detached
Style	2 Storey
Status	Active

**Community Information**

Address	487 Mt Sundance Landing W
Subdivision	Sunridge
City	Lethbridge
County	Lethbridge
Province	Alberta
Postal Code	T1J 5J9

**Amenities**

Parking Spaces	2
Parking	Off Street, Parking Pad

**Interior**

Interior Features	Kitchen Island, Open Floorplan, Quartz Counters, Walk-In Closet(s)
Appliances	Central Air Conditioner, Dishwasher, Electric Cooktop, Microwave, Oven-Built-In, Range Hood, Refrigerator, Washer/Dryer
Heating	Forced Air
Cooling	Central Air
Has Basement	Yes

Basement	Finished, Full
----------	----------------

## Exterior

Exterior Features	Storage
Lot Description	Back Lane, Back Yard, Landscaped
Roof	Asphalt Shingle
Construction	Vinyl Siding, Wood Frame
Foundation	Poured Concrete

## Additional Information

Date Listed	June 11th, 2025
Days on Market	3
Zoning	R-CM

## Listing Details

Listing Office	RE/MAX REAL ESTATE - LETHBRIDGE
----------------	---------------------------------

Data is supplied by Pillar 9â„¢ MLS® System. Pillar 9â„¢ is the owner of the copyright in its MLS® System. Data is deemed reliable but is not guaranteed accurate by Pillar 9â„¢. The trademarks MLS®, Multiple Listing Service® and the associated logos are owned by The Canadian Real Estate Association (CREA) and identify the quality of services provided by real estate professionals who are members of CREA. Used under license.