

\$250,000 - 6, 210 Village Terrace Sw, Calgary

MLS® #A2228823

\$250,000

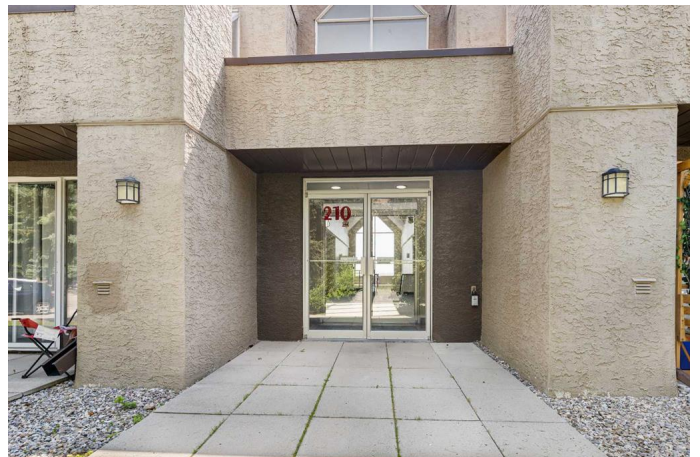
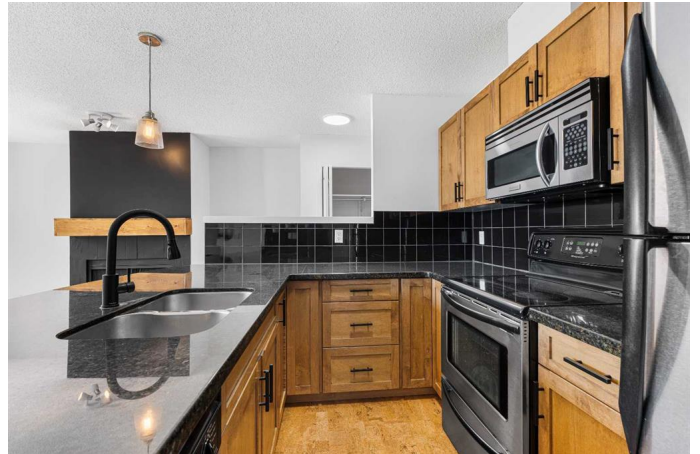
1 Bedroom, 1.00 Bathroom, 540 sqft

Residential on 0.00 Acres

Patterson, Calgary, Alberta

Welcome to "The News" where city views and cozy vibes collide!

Perched just below the top floor in a boutique building of only ten units, this sun-soaked condo is a true hidden gem. Step inside and you'll be greeted by warm cork floors and natural light pouring in from floor-to-ceiling windows that frame sweeping views of downtown Calgary and Edworthy Park. Love to entertain or unwind with a view? Step out onto your massive 121 sq ft deck – the perfect place for morning coffee or just soaking in the city skyline. Inside, the open layout, tall ceilings, and chic light fixtures give the space an airy, upscale feel. The kitchen is a dream with maple cabinets, granite counters, a stylish under-mount sink, stainless steel appliances, and a generous island with room for four. During the cold Calgary winters you can get cozy in the living room by the wood-burning fireplace. The BRAND NEW stacked washer and dryer make laundry day a breeze, with extra space for your supplies, too. You'll also love the hotel-style perks: a lap pool, hot tub, gym, tennis courts, walking paths and more! Planning a get-together? The owner's lounge is party-ready with a full kitchen and bar area for rent. Your secure underground parking stall is just a short flight of stairs from your front door, and there's a large storage locker for all your extra gear. With quick access to Bow Trail, downtown, public transit, and a straight shot west to the mountains, this location is the best of both city



and escape. Book your private showing today and come see why this view-packed condo is the one youâ€™ve been waiting for!

Built in 1987

Essential Information

MLS® #	A2228823
Price	\$250,000
Bedrooms	1
Bathrooms	1.00
Full Baths	1
Square Footage	540
Acres	0.00
Year Built	1987
Type	Residential
Sub-Type	Apartment
Style	Single Level Unit
Status	Active

Community Information

Address	6, 210 Village Terrace Sw
Subdivision	Patterson
City	Calgary
County	Calgary
Province	Alberta
Postal Code	T3H 2L4

Amenities

Amenities	Clubhouse, Fitness Center, Visitor Parking, Indoor Pool, Recreation Room
Parking Spaces	1
Parking	Underground

Interior

Interior Features	Ceiling Fan(s)
Appliances	Dishwasher, Electric Range, Microwave, Refrigerator, Washer/Dryer Stacked
Heating	Baseboard, Natural Gas, Hot Water

Cooling	None
Fireplace	Yes
# of Fireplaces	1
Fireplaces	Wood Burning
# of Stories	4

Exterior

Exterior Features	Balcony
Roof	Tar/Gravel
Construction	Concrete, Stucco, Wood Frame

Additional Information

Date Listed	June 12th, 2025
Days on Market	5
Zoning	M-C1 d37

Listing Details

Listing Office	Real Broker
----------------	-------------

Data is supplied by Pillar 9â„¢ MLS® System. Pillar 9â„¢ is the owner of the copyright in its MLS® System. Data is deemed reliable but is not guaranteed accurate by Pillar 9â„¢. The trademarks MLS®, Multiple Listing Service® and the associated logos are owned by The Canadian Real Estate Association (CREA) and identify the quality of services provided by real estate professionals who are members of CREA. Used under license.