

\$2,400 - 2120 10 Street, Coaldale

MLS® #A2228241

\$2,400

0 Bedroom, 0.00 Bathroom, 1,125 sqft

Rental on 0.00 Acres

NONE, Coaldale, Alberta

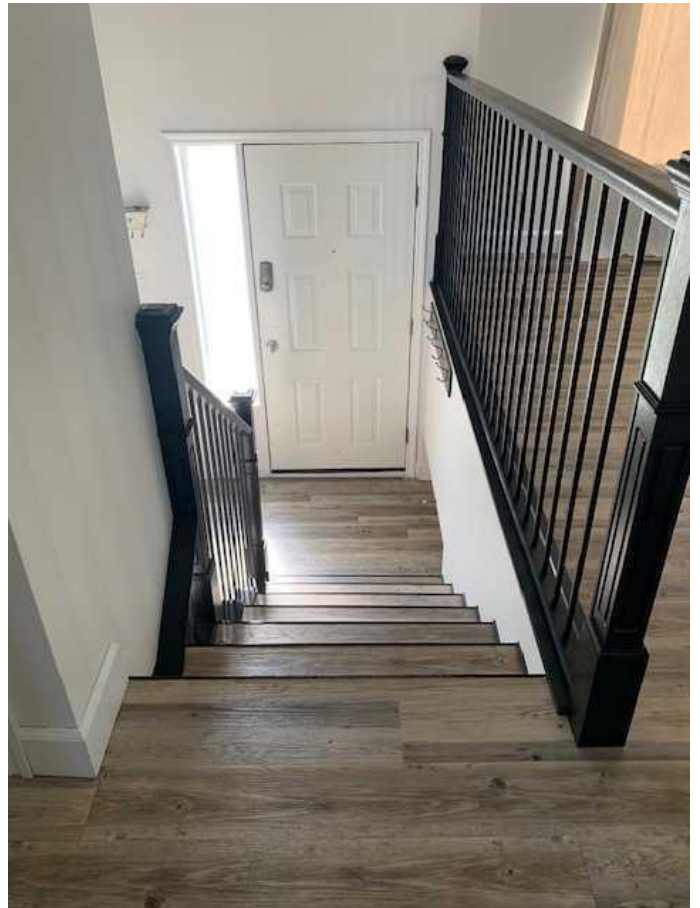
Welcome to this 5-bedroom, 2.5-bathroom full house in the heart of Coaldale. Beautifully updated, open, and spacious home that offers the perfect blend of comfort and convenience. This inviting home is ideal for families, with generous living areas and thoughtful upgrades throughout. Located in a family-friendly neighborhood, you'll be just minutes away from schools, parks, and playgrounds â€” making daily life both easy and enjoyable. Recent updates bring a fresh and modern feel to the home, and the large, private yard offers the perfect outdoor space for entertaining, relaxing, or letting the kids play. Rent is \$2400 + Utilities. **Pets Upon Approval** Subject to \$50.00 fee/month per pet. Application required prior to viewing. Security Deposit: \$2400.00

Essential Information

MLS® #	A2228241
Price	\$2,400
Bathrooms	0.00
Square Footage	1,125
Acres	0.00
Type	Rental
Status	Active

Community Information

Address	2120 10 Street
Subdivision	NONE



City	Coaldale
County	Lethbridge County
Province	Alberta
Postal Code	T1M 1B6

Amenities

Parking	Driveway, Off Street
---------	----------------------

Interior

Appliances	Central Air Conditioner, Dishwasher, Microwave, Oven, Refrigerator, Stove(s), Washer/Dryer, Window Coverings
------------	--

Exterior

Roof	Asphalt Shingle
------	-----------------

Additional Information

Date Listed	June 9th, 2025
Days on Market	3

Listing Details

Listing Office	Grassroots Realty Group
----------------	-------------------------

Data is supplied by Pillar 9â„¢ MLS® System. Pillar 9â„¢ is the owner of the copyright in its MLS® System. Data is deemed reliable but is not guaranteed accurate by Pillar 9â„¢. The trademarks MLS®, Multiple Listing Service® and the associated logos are owned by The Canadian Real Estate Association (CREA) and identify the quality of services provided by real estate professionals who are members of CREA. Used under license.