

# \$8 - 410 South Railway Drive Ne, Redcliff

MLS® #A2228178

**\$8**

0 Bedroom, 0.00 Bathroom,  
Commercial on 1.39 Acres

Redcliff Industrial, Redcliff, Alberta

1.39 acre lot available for lease with fenced compound that is hard packed. This parcel also has 7200 sq/ft of shop space with office space, mezzanine, bathrooms..... 5 ton crane & 3 phase power. Base rent is \$8 sq/ft + Occupancy costs of taxes, insurance and utilities.

Built in 1976

## Essential Information

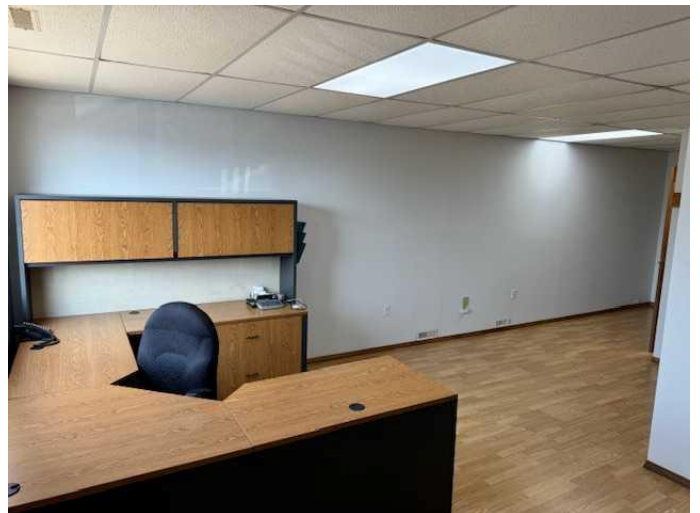
MLS® #	A2228178
Price	\$8
Bathrooms	0.00
Acres	1.39
Year Built	1976
Type	Commercial
Sub-Type	Business
Status	Active

## Community Information

Address	410 South Railway Drive Ne
Subdivision	Redcliff Industrial
City	Redcliff
County	Cypress County
Province	Alberta
Postal Code	T0J2P0

## Additional Information

Date Listed	June 6th, 2025
-------------	----------------



Days on Market	7
Zoning	I1

## **Listing Details**

Listing Office	RIVER STREET REAL ESTATE
----------------	--------------------------

Data is supplied by Pillar 9â„¢ MLS® System. Pillar 9â„¢ is the owner of the copyright in its MLS® System. Data is deemed reliable but is not guaranteed accurate by Pillar 9â„¢. The trademarks MLS®, Multiple Listing Service® and the associated logos are owned by The Canadian Real Estate Association (CREA) and identify the quality of services provided by real estate professionals who are members of CREA. Used under license.