

\$169,900 - 960 Westridge Road, Strathmore

MLS® #A2226993

\$169,900

0 Bedroom, 0.00 Bathroom,
Commercial on 0.00 Acres

Westmount_Strathmore, Strathmore, Alberta

Long-established restaurant business with high exposure on Highway #1 and plenty of parking. The kitchen serves the restaurant (104 seating plus Patio area seasonal allows up to 150 people) and the hotel lounge (very busy with 30 slot machines & pool tables tournament lounge). The restaurant's condition is very well-maintained, and the landlord is easy to work with, offering cheap rent for the restaurant's size. Only 25 minutes from Calgary. This is a perfect opportunity for a family to operate as it has great potential to grow the business to the next level.

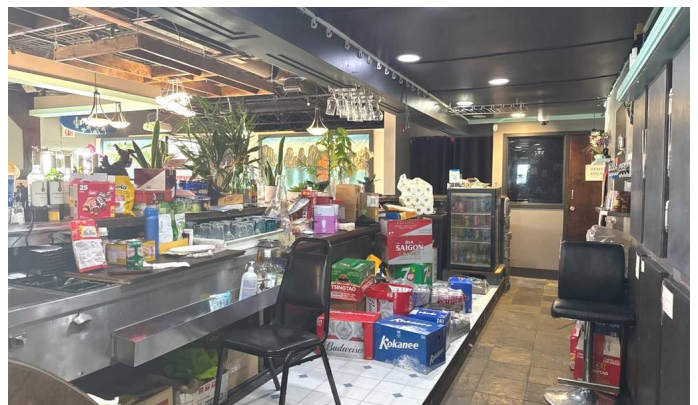
Built in 1980

Essential Information

MLS® #	A2226993
Price	\$169,900
Bathrooms	0.00
Acres	0.00
Year Built	1980
Type	Commercial
Sub-Type	Business
Status	Active

Community Information

Address	960 Westridge Road
Subdivision	Westmount_Strathmore
City	Strathmore
County	Wheatland County



Province	Alberta
Postal Code	T1P 1H8

Additional Information

Date Listed	June 5th, 2025
Days on Market	9

Listing Details

Listing Office	CIR Realty
----------------	------------

Data is supplied by Pillar 9â„¢ MLS® System. Pillar 9â„¢ is the owner of the copyright in its MLS® System. Data is deemed reliable but is not guaranteed accurate by Pillar 9â„¢. The trademarks MLS®, Multiple Listing Service® and the associated logos are owned by The Canadian Real Estate Association (CREA) and identify the quality of services provided by real estate professionals who are members of CREA. Used under license.