

\$385,900 - 608, 210 Firelight Way W, Lethbridge

MLS® #A2224154

\$385,900

3 Bedroom, 4.00 Bathroom, 1,385 sqft
Residential on 0.10 Acres

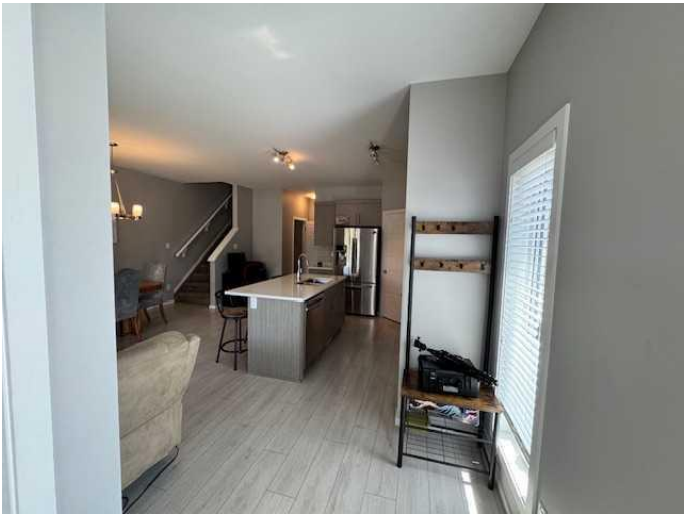
Copperwood, Lethbridge, Alberta

Welcome to 608 210 Firelight Way W, a beautifully maintained 2 storey townhouse in one of Lethbridge’s most sought-after west side communities! This spacious property offers 3 generous bedrooms, 2 full plus 2 half baths, including master suite with 4 piece ensuite, making it ideal for families of any size. With two bright, comfortable living rooms and a fully finished basement, there's plenty of room to relax, entertain, or create a dedicated space for work or hobbies. Situated close to parks, schools, and all west side amenities, this home combines modern living with a warm, family-friendly atmosphere. Don’t miss your chance to make this move-in-ready property yours!

Built in 2017

Essential Information

MLS® #	A2224154
Price	\$385,900
Bedrooms	3
Bathrooms	4.00
Full Baths	2
Half Baths	2
Square Footage	1,385
Acres	0.10
Year Built	2017
Type	Residential
Sub-Type	Row/Townhouse



Style	2 Storey
Status	Active

Community Information

Address	608, 210 Firelight Way W
Subdivision	Copperwood
City	Lethbridge
County	Lethbridge
Province	Alberta
Postal Code	T1J5T3

Amenities

Amenities	None
Parking Spaces	2
Parking	Concrete Driveway, Single Garage Attached
# of Garages	1

Interior

Interior Features	Ceiling Fan(s), Closet Organizers, Kitchen Island
Appliances	Dishwasher, Dryer, Microwave Hood Fan, Refrigerator, Stove(s), Washer
Heating	Forced Air, Natural Gas
Cooling	Central Air
Has Basement	Yes
Basement	Finished, Full

Exterior

Exterior Features	Balcony
Lot Description	Corner Lot
Roof	Asphalt Shingle
Construction	Vinyl Siding, Wood Frame
Foundation	Poured Concrete

Additional Information

Date Listed	May 26th, 2025
Days on Market	24
Zoning	R-75

Listing Details

Listing Office	Royal Lepage South Country - Lethbridge
----------------	---

Data is supplied by Pillar 9â„¢ MLS® System. Pillar 9â„¢ is the owner of the copyright in its MLS® System. Data is deemed reliable but is not guaranteed accurate by Pillar 9â„¢. The trademarks MLS®, Multiple Listing Service® and the associated logos are owned by The Canadian Real Estate Association (CREA) and identify the quality of services provided by real estate professionals who are members of CREA. Used under license.