

\$600,000 - Nw 84 Ave, Lac La Biche

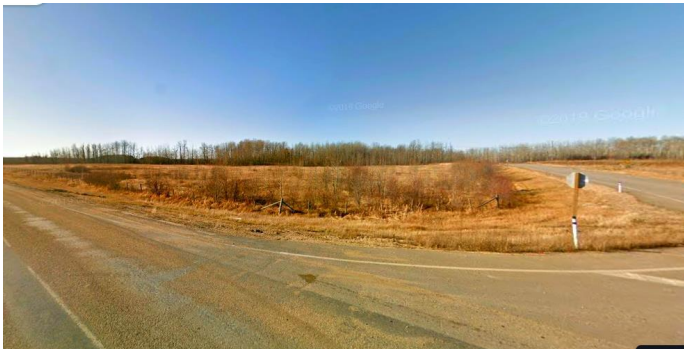
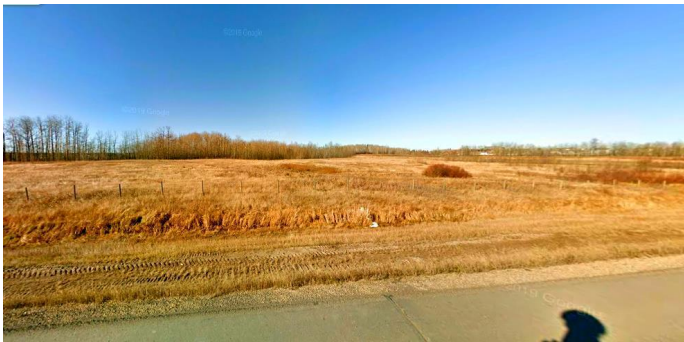
MLS® #A2223331

\$600,000

0 Bedroom, 0.00 Bathroom,
Commercial on 8.65 Acres

Lac La Biche, Lac La Biche, Alberta

Prime Highway 881 Development Opportunity!
Seize the potential of 8.65 acres with prime highway frontage in town. This strategic location offers direct access via a paved road along the north side of the parcel, with town water and sewer services conveniently nearby. Perfect for a commercial strip mall or service center, this property is ideally positioned to capture high-visibility traffic heading to Conklin and Fort McMurray. A rare investment opportunity in a growing area. Build your business where opportunity meets demand!



Essential Information

| | |
|-----------|------------|
| MLS® # | A2223331 |
| Price | \$600,000 |
| Bathrooms | 0.00 |
| Acres | 8.65 |
| Type | Commercial |
| Sub-Type | Mixed Use |
| Status | Active |

Community Information

| | |
|-------------|---------------------|
| Address | Nw 84 Ave |
| Subdivision | Lac La Biche |
| City | Lac La Biche |
| County | Lac La Biche County |
| Province | Alberta |
| Postal Code | T0A 2C0 |

Additional Information

| | |
|----------------|---------------------------|
| Date Listed | May 21st, 2025 |
| Days on Market | 35 |
| Zoning | Highway Commercial Distri |

Listing Details

| | |
|----------------|------------------------|
| Listing Office | RE/MAX LA BICHE REALTY |
|----------------|------------------------|

Data is supplied by Pillar 9â„¢ MLS® System. Pillar 9â„¢ is the owner of the copyright in its MLS® System. Data is deemed reliable but is not guaranteed accurate by Pillar 9â„¢. The trademarks MLS®, Multiple Listing Service® and the associated logos are owned by The Canadian Real Estate Association (CREA) and identify the quality of services provided by real estate professionals who are members of CREA. Used under license.