

# \$149,000 - 410n 200e, Raymond

MLS® #A2223325

**\$149,000**

2 Bedroom, 1.00 Bathroom, 1,541 sqft

Residential on 0.22 Acres

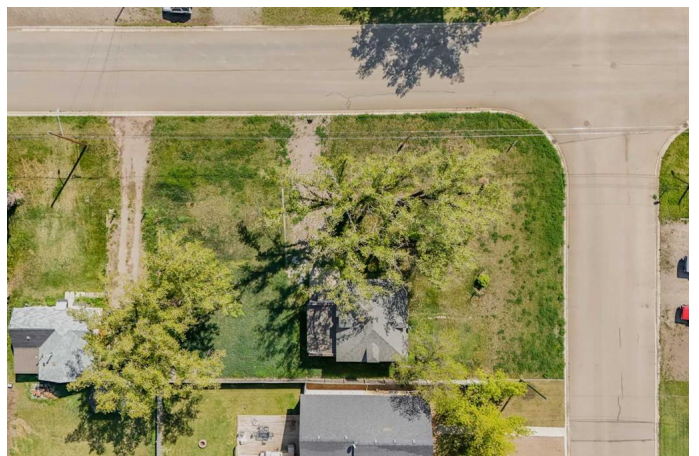
NONE, Raymond, Alberta

Unlock the potential of this spacious two-story home featuring over 1,500 sq ft of bare-stud interior, offering a canvas for your vision. Whether you're looking to renovate and customize every detail or start fresh and build your dream home on this desirable lot, the possibilities are endless. This property provides a rare opportunity to create a personalized living space in a sought-after location. Upgrades include water lines for in floor heating, new windows and doors, new breaker panel. New concrete floor throughout the main level and a newer roof all while benefiting from an established neighbourhood. Call your favourite REALTOR® today!

Built in 1902

## Essential Information

MLS® #	A2223325
Price	\$149,000
Bedrooms	2
Bathrooms	1.00
Full Baths	1
Square Footage	1,541
Acres	0.22
Year Built	1902
Type	Residential
Sub-Type	Detached
Style	1 and Half Storey
Status	Active



## Community Information

Address	410n 200e
Subdivision	NONE
City	Raymond
County	Warner No. 5, County of
Province	Alberta
Postal Code	T0K 2S0

## Amenities

Parking Spaces	2
Parking	Off Street

## Interior

Interior Features	See Remarks
Appliances	None
Heating	Forced Air, Natural Gas
Cooling	None
Basement	None

## Exterior

Exterior Features	Storage
Lot Description	Corner Lot, Front Yard, Lawn
Roof	Asphalt Shingle
Construction	Stucco
Foundation	Poured Concrete

## Additional Information

Date Listed	May 22nd, 2025
Days on Market	25
Zoning	RESI

## Listing Details

Listing Office	Onyx Realty Ltd.
----------------	------------------

Data is supplied by Pillar 9â„¢ MLS® System. Pillar 9â„¢ is the owner of the copyright in its MLS® System. Data is deemed reliable but is not guaranteed accurate by Pillar 9â„¢. The trademarks MLS®, Multiple Listing Service® and the associated logos are owned by The Canadian Real Estate Association (CREA) and identify the quality of services provided by real estate professionals who are members of CREA. Used under license.