

# \$335,000 - 4215, 6 Merganser Drive W, Chestermere

MLS® #A2222355

**\$335,000**

2 Bedroom, 2.00 Bathroom, 700 sqft  
Residential on 0.00 Acres

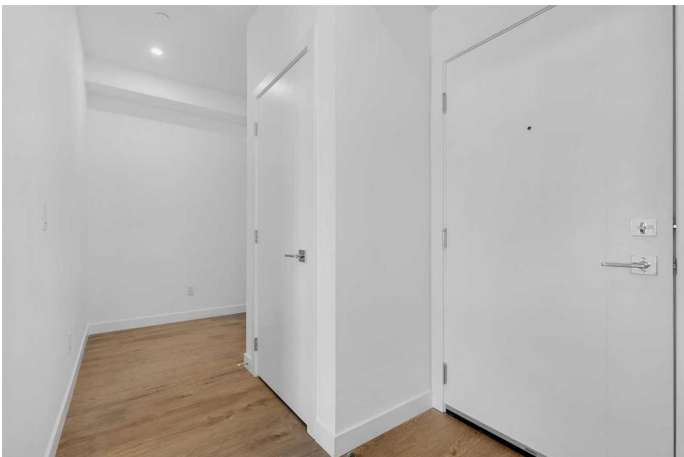
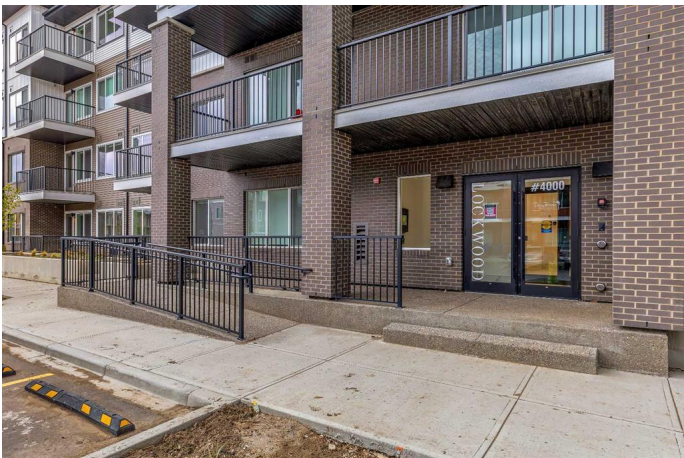
Chelsea\_CH, Chestermere, Alberta

Discover modern living in this 2-bedroom, 2-bathroom gem on the second floor, spanning 700 sq. ft. Designed by an award-winning builder, this unit features energy-efficient design, sleek 9-foot ceilings, and expansive windows for natural light. Enjoy quartz countertops, contemporary cabinetry, and premium stainless steel appliances in the kitchen. The spacious layout includes luxury vinyl plank flooring, a stackable washer and dryer, and spa-inspired bathrooms with finely crafted vanities. Added perks: heated underground parking, security monitoring, and main-level bike storage room PLUS one titled underground heated parking stall. A stylish, low-maintenance home in a vibrant community!

Built in 2025

## Essential Information

MLS® #	A2222355
Price	\$335,000
Bedrooms	2
Bathrooms	2.00
Full Baths	2
Square Footage	700
Acres	0.00
Year Built	2025
Type	Residential



Sub-Type	Apartment
Style	Single Level Unit
Status	Active

### Community Information

Address	4215, 6 Merganser Drive W
Subdivision	Chelsea_CH
City	Chestermere
County	Chestermere
Province	Alberta
Postal Code	T1X 2Y2

### Amenities

Amenities	Bicycle Storage, Parking, Secured Parking
Parking Spaces	1
Parking	Parkade, Stall, Underground

### Interior

Interior Features	Quartz Counters, Recessed Lighting
Appliances	Dishwasher, Dryer, Electric Stove, Microwave Hood Fan, Refrigerator, Washer, Window Coverings
Heating	Baseboard
Cooling	None
# of Stories	4

### Exterior

Exterior Features	Balcony, BBQ gas line
Roof	Membrane
Construction	Brick, Composite Siding, Wood Frame

### Additional Information

Date Listed	May 20th, 2025
Days on Market	73
Zoning	M-2

### Listing Details

Listing Office	RE/MAX Real Estate (Mountain View)
----------------	------------------------------------

Data is supplied by Pillar 9â„¢ MLSÂ® System. Pillar 9â„¢ is the owner of the copyright in its MLSÂ® System. Data is deemed reliable but is not guaranteed accurate by Pillar 9â„¢. The trademarks MLSÂ®, Multiple Listing ServiceÂ® and the associated logos are owned by The Canadian Real Estate Association (CREA) and identify the quality of services

