

# \$299,000 - 431046 Range Road, Rural Ponoka County

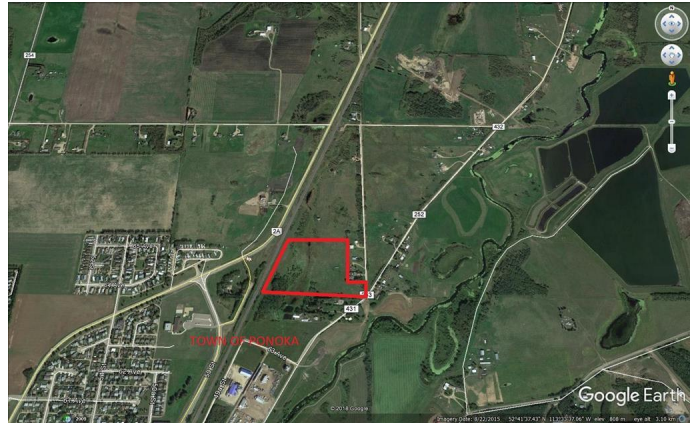
MLS® #A2221770

**\$299,000**

0 Bedroom, 0.00 Bathroom,  
Land on 20.75 Acres

NONE, Rural Ponoka County, Alberta

Prime Land, Prime Location Near town of Ponoka. One of the best lands available at a very good location. 20+ Acres Located on a paved Road nestled between acreages just outside of town of Ponoka limits. This land can be put to many uses, it can be rezoned (Subject to County approval) to build acreages. Development or personal use this land has a lot to offer due to its location, Size & Price. The land is located within minutes of Ponoka Downtown. Convenient Access on Range Road 253 with access on range road 253.



## Essential Information

MLS® #	A2221770
Price	\$299,000
Bathrooms	0.00
Acres	20.75
Type	Land
Sub-Type	Residential Land
Status	Active

## Community Information

Address	431046 Range Road
Subdivision	NONE
City	Rural Ponoka County
County	Ponoka County
Province	Alberta
Postal Code	T4J 1R1



**Additional Information**

Date Listed	May 18th, 2025
Days on Market	115
Zoning	1 Agricultural

**Listing Details**

Listing Office	Century 21 Gillany Realty
----------------	---------------------------

Data is supplied by Pillar 9â„¢ MLS® System. Pillar 9â„¢ is the owner of the copyright in its MLS® System. Data is deemed reliable but is not guaranteed accurate by Pillar 9â„¢. The trademarks MLS®, Multiple Listing Service® and the associated logos are owned by The Canadian Real Estate Association (CREA) and identify the quality of services provided by real estate professionals who are members of CREA. Used under license.