

# \$299,990 - 156, 55 Castleridge Boulevard Ne, Calgary

MLS® #A2217265

**\$299,990**

0 Bedroom, 0.00 Bathroom,  
Commercial on 0.00 Acres

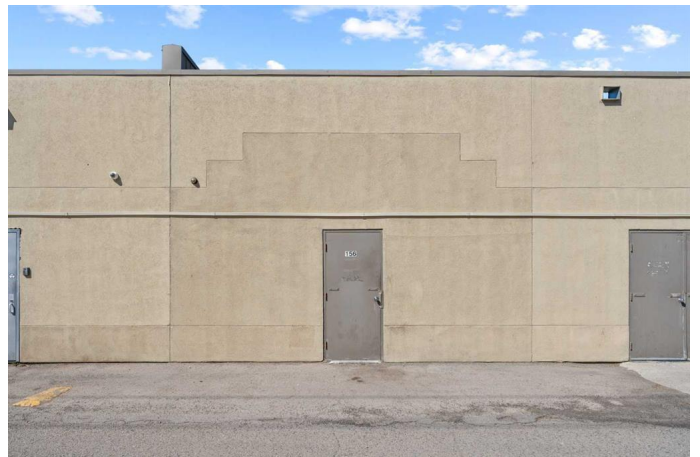
Castleridge, Calgary, Alberta

Great opportunity to take over a fully established and operational franchise barbecue pit located in a busy retail plaza in NE Calgary. This turn-key business features a professionally designed interior with a functional kitchen, dine-in area, and all leasehold improvements and assets included in the sale. The space is well-suited for takeout, delivery, or dine-in service, with infrastructure in place to support a variety of food concepts. Located in a high-traffic commercial hub surrounded by residential density and major traffic routes, the site benefits from strong visibility and steady customer flow. This is an asset and franchise sale, making it ideal for a seasoned operator or ambitious entrepreneur looking to continue an established brand or bring their own concept to life without the cost and risk of starting from scratch. Please do not approach staff or visit the business without a showing appointment. All inquiries must be directed to the listing agent.

Built in 1991

## Essential Information

MLS® #	A2217265
Price	\$299,990
Bathrooms	0.00
Acres	0.00
Year Built	1991



Type	Commercial
Sub-Type	Business
Status	Active

### Community Information

Address	156, 55 Castleridge Boulevard Ne
Subdivision	Castleridge
City	Calgary
County	Calgary
Province	Alberta
Postal Code	T3J 3J8

### Additional Information

Date Listed	May 6th, 2025
Days on Market	127

### Listing Details

Listing Office	PropZap Realty
----------------	----------------

Data is supplied by Pillar 9â„¢ MLS® System. Pillar 9â„¢ is the owner of the copyright in its MLS® System. Data is deemed reliable but is not guaranteed accurate by Pillar 9â„¢. The trademarks MLS®, Multiple Listing Service® and the associated logos are owned by The Canadian Real Estate Association (CREA) and identify the quality of services provided by real estate professionals who are members of CREA. Used under license.