

\$97,500 - Lot 6, 715066 Rge Rd 95, Beaverlodge

MLS® #A2216876

\$97,500

0 Bedroom, 0.00 Bathroom,
Land on 3.99 Acres

N/A, Beaverlodge, Alberta

No waiting for power and gas, build right away!
Power and gas are in the subdivision. There are great water wells in the area. Located a stones throw from pavement and less than a mile from the 4 lane highway, you can get to Beaverlodge in about 2 minutes and Grande Prairie in about 20. Nice views, quiet neighborhood, come have a look for yourself.



Essential Information

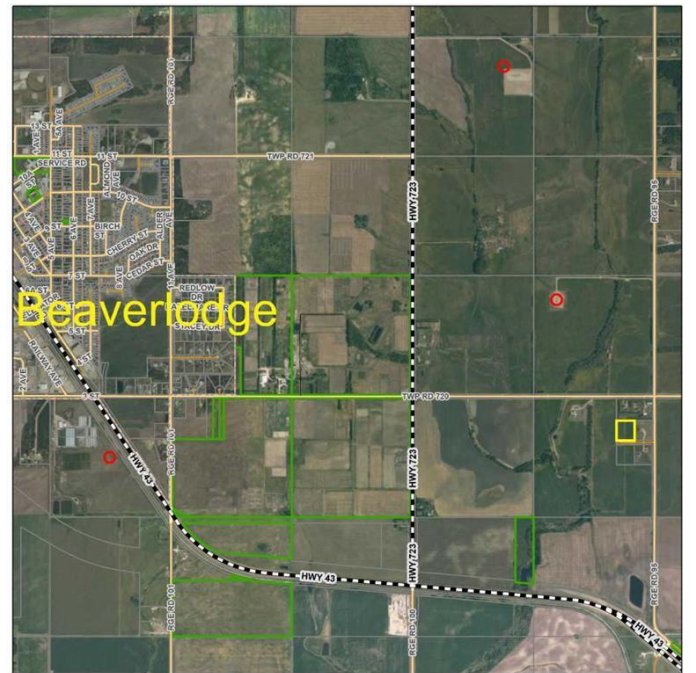
MLS® #	A2216876
Price	\$97,500
Bathrooms	0.00
Acres	3.99
Type	Land
Sub-Type	Residential Land
Status	Active

Community Information

Address	Lot 6, 715066 Rge Rd 95
Subdivision	N/A
City	Beaverlodge
County	Grande Prairie No. 1, County
Province	Alberta
Postal Code	T0H 0C0

Additional Information

Date Listed	May 2nd, 2025
Days on Market	134



Zoning

CR 5

Listing Details

Listing Office

RE/MAX Grande Prairie

Data is supplied by Pillar 9â„¢ MLS® System. Pillar 9â„¢ is the owner of the copyright in its MLS® System. Data is deemed reliable but is not guaranteed accurate by Pillar 9â„¢. The trademarks MLS®, Multiple Listing Service® and the associated logos are owned by The Canadian Real Estate Association (CREA) and identify the quality of services provided by real estate professionals who are members of CREA. Used under license.