

\$369,000 - 13425 18 Avenue, Blairmore

MLS® #A2214872

\$369,000

2 Bedroom, 1.00 Bathroom, 1,286 sqft

Residential on 0.11 Acres

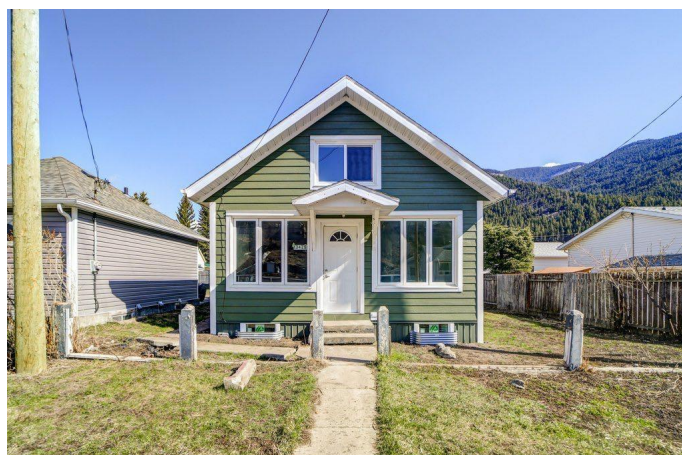
NONE, Blairmore, Alberta

Welcome to the Crowsnest Pass! This adorable 1.5 storey home located in the heart of Blairmore. Centrally located and walking distance to schools, shopping and all amenities. This beautiful home has been lovingly upgraded and features 1 bathroom, 3 bedrooms, 2 being on the upper level which if desired could make a dreamy primary suite. The kitchen and dining room are open plan that features beautiful countertops and oak cabinets. A perfect spot for family entertaining. Property features a concrete basement which one could use their scope of imagination to create endless possibilities. If you desire a place to build a garage this property has alley access and the room to accommodate. This home is an excellent opportunity for all that wish to live in a beautiful community that offers endless activities for all ages. Come home to the mountains and make this your new home!

Built in 1905

Essential Information

MLS® #	A2214872
Price	\$369,000
Bedrooms	2
Bathrooms	1.00
Full Baths	1
Square Footage	1,286
Acres	0.11



Year Built	1905
Type	Residential
Sub-Type	Detached
Style	1 and Half Storey
Status	Active

Community Information

Address	13425 18 Avenue
Subdivision	NONE
City	Blairmore
County	Crowsnest Pass
Province	Alberta
Postal Code	T0K 0E0

Amenities

Parking Spaces	2
Parking	Off Street

Interior

Interior Features	Bookcases, Jetted Tub, Storage, Vinyl Windows, Master Downstairs
Appliances	Dishwasher, Gas Water Heater, Refrigerator, Stove(s), Washer/Dryer Stacked
Heating	Forced Air, Natural Gas
Cooling	None
Has Basement	Yes
Basement	Exterior Entry, Full, Unfinished

Exterior

Exterior Features	Private Yard
Lot Description	Back Lane, Back Yard, Level
Roof	Asphalt
Construction	Composite Siding
Foundation	Poured Concrete

Additional Information

Date Listed	April 22nd, 2025
Days on Market	42
Zoning	R -1

Listing Details

Listing Office

RE/MAX REAL ESTATE - LETHBRIDGE

Data is supplied by Pillar 9â„¢ MLSÂ® System. Pillar 9â„¢ is the owner of the copyright in its MLSÂ® System. Data is deemed reliable but is not guaranteed accurate by Pillar 9â„¢. The trademarks MLSÂ®, Multiple Listing ServiceÂ® and the associated logos are owned by The Canadian Real Estate Association (CREA) and identify the quality of services provided by real estate professionals who are members of CREA. Used under license.