

\$14,188,400 - 158 Acres Glenmore Trail Se, Rural Rocky View County

MLS® #A2214640

\$14,188,400

0 Bedroom, 0.00 Bathroom,
Land on 158.02 Acres

NONE, Rural Rocky View County, Alberta

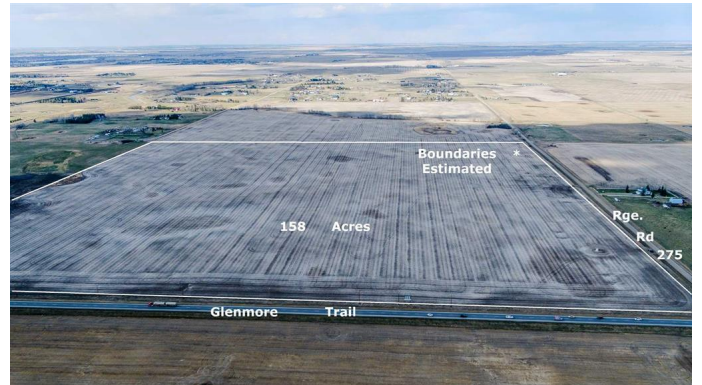
158 acres fronting onto Glenmore Trail east of Calgary City limits and located in the Calgary Chestermere Langdon Corridor. Great location to build Estate home for multiple or extended family. Lots of development planned and underway in surrounding southeast Calgary, Langdon and Chestermere; A great opportunity to plan for your future. Fronting onto Glenmore Trail (Highway 560) and Range Road 275 runs along east boundary. Check it out today!

Essential Information

MLS® #	A2214640
Price	\$14,188,400
Bathrooms	0.00
Acres	158.02
Type	Land
Sub-Type	Commercial Land
Status	Active

Community Information

Address	158 Acres Glenmore Trail Se
Subdivision	NONE
City	Rural Rocky View County
County	Rocky View County
Province	Alberta
Postal Code	T0J 1X2



Additional Information

Date Listed	May 4th, 2025
Days on Market	95
Zoning	A-GEN

Listing Details

Listing Office	Legacy Real Estate Services
----------------	-----------------------------

Data is supplied by Pillar 9â„¢ MLS® System. Pillar 9â„¢ is the owner of the copyright in its MLS® System. Data is deemed reliable but is not guaranteed accurate by Pillar 9â„¢. The trademarks MLS®, Multiple Listing Service® and the associated logos are owned by The Canadian Real Estate Association (CREA) and identify the quality of services provided by real estate professionals who are members of CREA. Used under license.