

\$199,000 - 816a 16 Avenue Sw, Calgary

MLS® #A2214441

\$199,000

0 Bedroom, 0.00 Bathroom,
Commercial on 0.00 Acres

Beltline, Calgary, Alberta

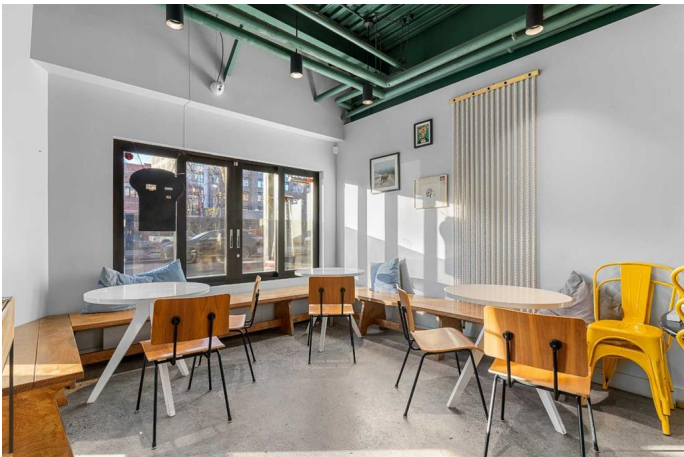
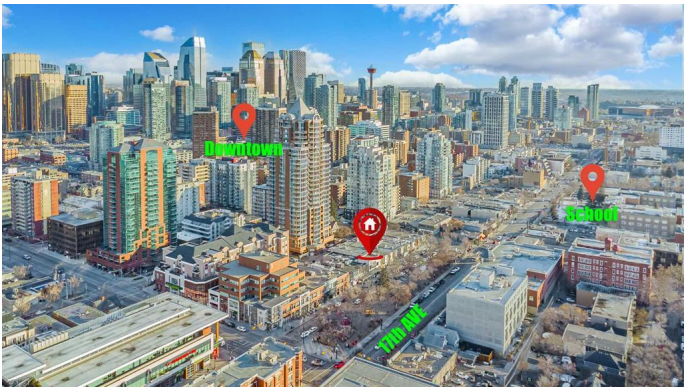
Turnkey Bubble Tea Business for Sale â€“
Prime Calgary Location

An exciting opportunity awaits in Calgaryâ€™s thriving food and beverage industry. This well-established and locally loved bubble tea shop is now available for sale. Situated in a high-traffic area, the business enjoys a loyal customer base and strong brand recognition. Offering a unique fusion of Western fruit smoothies and traditional Asian bubble tea ingredients, it stands out from competitors and continues to attract a diverse clientele. Fully equipped and move-in ready, the shop includes all necessary equipment and furnishings, making it a seamless transition for a new owner. With excellent potential for growth, there are opportunities to expand menu offerings, introduce delivery services, or even explore additional locations. Donâ€™t miss this rare chance to own a profitable and growing business in Calgary. Contact us today for more details and financial information.

Built in 1965

Essential Information

MLS® #	A2214441
Price	\$199,000
Bathrooms	0.00
Acres	0.00



Year Built	1965
Type	Commercial
Sub-Type	Retail
Status	Active

Community Information

Address	816a 16 Avenue Sw
Subdivision	Beltline
City	Calgary
County	Calgary
Province	Alberta
Postal Code	T2R 0S9

Additional Information

Date Listed	April 23rd, 2025
Days on Market	5
Zoning	000

Listing Details

Listing Office	MaxWell Canyon Creek
----------------	----------------------

Data is supplied by Pillar 9â„¢ MLS® System. Pillar 9â„¢ is the owner of the copyright in its MLS® System. Data is deemed reliable but is not guaranteed accurate by Pillar 9â„¢. The trademarks MLS®, Multiple Listing Service® and the associated logos are owned by The Canadian Real Estate Association (CREA) and identify the quality of services provided by real estate professionals who are members of CREA. Used under license.