

# \$645,000 - 226 Chelsea Heath Se, Chestermere

MLS® #A2214426

**\$645,000**

3 Bedroom, 3.00 Bathroom, 1,620 sqft  
Residential on 0.08 Acres

Chelsea\_CH, Chestermere, Alberta

**\*\*\*Stunning 3-Bedroom, 2.5-Bath Home with  
Tons of Upgrades & Large Lot\*\*\***

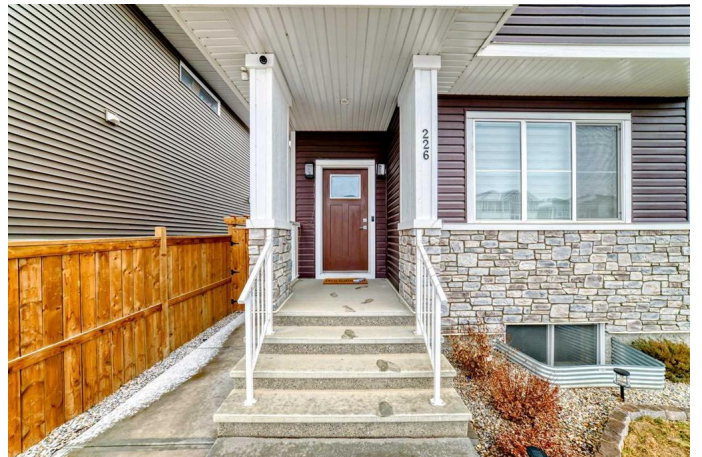
Located in a prime area close to parks, schools, and grocery stores, this beautifully upgraded 2022-built home offers approximately 1,650 sq. ft. of living space with an additional 3,300+ sq. ft. of traditional lot. With modern finishes and thoughtful upgrades by the current owner, this home combines comfort and style in every corner.

Main Level Features:

Open-concept living and dining areas, perfect for entertaining  
Upgraded kitchen with premium appliances, quartz countertops, and ample storage  
Durable LVP flooring throughout, with ceramic tile accents  
Convenient 2-piece bath for guests  
Charming exterior with vinyl and stone finishes, along with front landscaping  
Included: Central air conditioner and water softener for added convenience

Upstairs Features:

Spacious bonus room ideal for a home office or playroom  
Master bedroom with large windows and a 3-piece ensuite  
Two additional well-sized bedrooms with a second full bathroom  
Laundry room for added convenience  
Additional Highlights:



Unfinished basement, offering endless potential for customization  
Fully landscaped, fenced backyard with a stamped concrete patio—perfect for outdoor gatherings  
Oversized concrete parking pad for extra parking space  
This is a must-see home that combines modern amenities with thoughtful upgrades throughout. Don't miss the opportunity to own this beautiful property. Schedule your showing today!

Built in 2022

### Essential Information

MLS® #	A2214426
Price	\$645,000
Bedrooms	3
Bathrooms	3.00
Full Baths	2
Half Baths	1
Square Footage	1,620
Acres	0.08
Year Built	2022
Type	Residential
Sub-Type	Detached
Style	2 Storey
Status	Active

### Community Information

Address	226 Chelsea Heath Se
Subdivision	Chelsea_CH
City	Chestermere
County	Chestermere
Province	Alberta
Postal Code	T1X 1Z5

### Amenities

Parking Spaces	2
----------------	---

Parking Parking Pad, Rear Drive

## Interior

Interior Features Chandelier, Kitchen Island, Pantry, Quartz Counters, Separate Entrance, Storage, Tray Ceiling(s), Walk-In Closet(s)

Appliances Central Air Conditioner, Dishwasher, Gas Range, Microwave, Refrigerator, Washer/Dryer Stacked, Window Coverings

Heating Forced Air, Natural Gas

Cooling Central Air, ENERGY STAR Qualified Equipment

Fireplace Yes

# of Fireplaces 1

Fireplaces Electric, Living Room

Has Basement Yes

Basement Exterior Entry, Unfinished, See Remarks

## Exterior

Exterior Features Private Yard

Lot Description Back Lane, Landscaped

Roof Asphalt Shingle

Construction Concrete, Vinyl Siding, Wood Frame

Foundation Poured Concrete

## Additional Information

Date Listed April 24th, 2025

Zoning R1

## Listing Details

Listing Office eXp Realty

Data is supplied by Pillar 9â„¢ MLSÂ® System. Pillar 9â„¢ is the owner of the copyright in its MLSÂ® System. Data is deemed reliable but is not guaranteed accurate by Pillar 9â„¢. The trademarks MLSÂ®, Multiple Listing ServiceÂ® and the associated logos are owned by The Canadian Real Estate Association (CREA) and identify the quality of services provided by real estate professionals who are members of CREA. Used under license.