

\$800,000 - 000 Conklin Road, Lac La Biche County

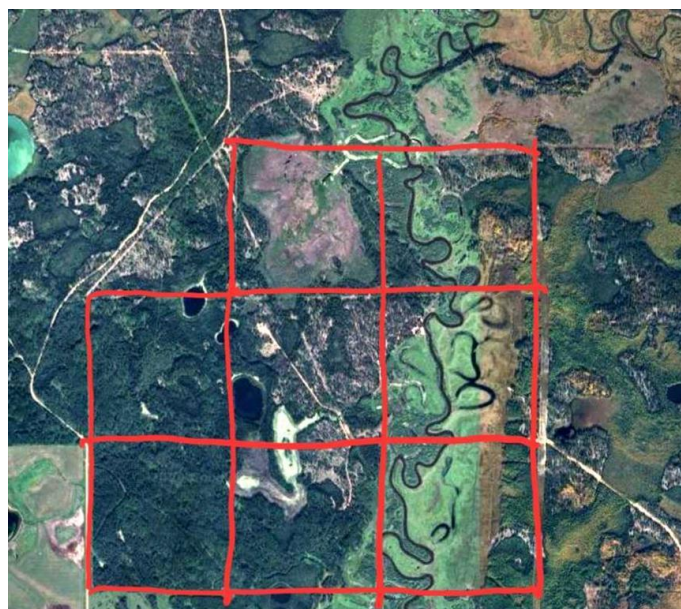
MLS® #A2213034

\$800,000

0 Bedroom, 0.00 Bathroom,
Land on 1120.00 Acres

NONE, Lac La Biche County, Alberta

1280 Acres. 3x deeded and 5x Lease quarters located on the North side of Lac La Biche Lake along the OWL River. Perimeter is fenced and there is lots of watering ponds. The Owl river divides the property to the East. A "real" cowboy could get his cattle to cross. Road access to East and West sides of this parcel. There is an old hunting cabin near the river with no utilities.



Essential Information

| | |
|-----------|------------------|
| MLS® # | A2213034 |
| Price | \$800,000 |
| Bathrooms | 0.00 |
| Acres | 1,120.00 |
| Type | Land |
| Sub-Type | Residential Land |
| Status | Active |

Community Information

| | |
|-------------|---------------------|
| Address | 000 Conklin Road |
| Subdivision | NONE |
| City | Lac La Biche County |
| County | Lac La Biche County |
| Province | Alberta |
| Postal Code | T0A 2C1 |

Amenities

| | |
|------------|---------------------------|
| Waterfront | River Access, River Front |
|------------|---------------------------|

Exterior

Lot Description Flood Plain, Many Trees, Pasture, See Remarks

Additional Information

Date Listed April 17th, 2025
Days on Market 64
Zoning Agricultural

Listing Details

Listing Office COLDWELL BANKER UNITED

Data is supplied by Pillar 9â„¢ MLS® System. Pillar 9â„¢ is the owner of the copyright in its MLS® System. Data is deemed reliable but is not guaranteed accurate by Pillar 9â„¢. The trademarks MLS®, Multiple Listing Service® and the associated logos are owned by The Canadian Real Estate Association (CREA) and identify the quality of services provided by real estate professionals who are members of CREA. Used under license.