

\$649,990 - 171 Chelsea Road, Chestermere

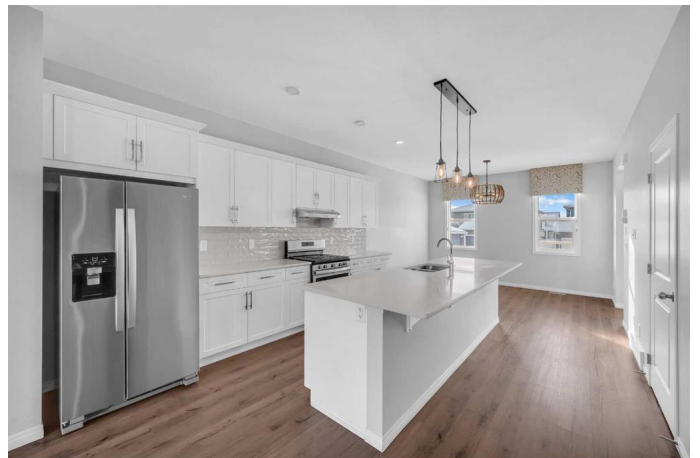
MLS® #A2211948

\$649,990

5 Bedroom, 4.00 Bathroom, 1,547 sqft
Residential on 0.08 Acres

Chelsea_CH, Chestermere, Alberta

Welcome to this stunning 5-bedroom, 3.5-bathroom detached home in the highly sought-after community of Chelsea, Chestermere. Previously a showhome, this property is filled with premium upgrades, CENTRAL AC, modern finishes, and a fully finished 2-bedroom illegal basement suite with a separate entrance, kitchen, laundry, full bathroom, and independent heating—an excellent opportunity for investors, first-time homebuyers, or those looking to upgrade. The open-concept main floor features a spacious living area, a gourmet kitchen with a gas stove, upgraded countertops, stainless steel appliances, a built-in microwave, sleek cabinetry, and a dining space, along with a convenient powder room. With 9-ft ceilings on both the main and basement levels, the home offers a bright and inviting ambiance. Upstairs, you'll find three generous bedrooms, including a luxurious master suite with a 5-piece ensuite, plus an additional full bathroom. The beautifully designed wall coverings on the main floor and master bedroom add a touch of sophistication. Sitting on a traditional 30'™ wide lot, this home includes a built-in deck for outdoor gatherings and a concrete parking pad for two vehicles. Ideally located just five minutes from Chestermere Lake, the public library, and shopping centers, with Easthills Shopping Center only a short 5-8 minute drive away, this home offers the perfect blend of luxury, space, and convenience. Why rent when you can own for the same cost? Call



your favorite Realtor today to book a private showing before this incredible opportunity is gone.

Built in 2021

Essential Information

MLS® #	A2211948
Price	\$649,990
Bedrooms	5
Bathrooms	4.00
Full Baths	3
Half Baths	1
Square Footage	1,547
Acres	0.08
Year Built	2021
Type	Residential
Sub-Type	Detached
Style	2 Storey
Status	Active

Community Information

Address	171 Chelsea Road
Subdivision	Chelsea_CH
City	Chestermere
County	Chestermere
Province	Alberta
Postal Code	T1X 1Z3

Amenities

Parking Spaces	2
Parking	Concrete Driveway, Off Street, On Street, Paved, Parking Pad

Interior

Interior Features	Double Vanity, Kitchen Island, No Animal Home, No Smoking Home, Open Floorplan, Pantry, Quartz Counters, Separate Entrance
Appliances	Dishwasher, Electric Stove, Gas Stove, Microwave, Range Hood, Refrigerator, Washer/Dryer, Window Coverings
Heating	Baseboard, Forced Air

Cooling	Central Air
Has Basement	Yes
Basement	Exterior Entry, Finished, Full, Suite

Exterior

Exterior Features	BBQ gas line, Other
Lot Description	Back Lane, Interior Lot, Level, Rectangular Lot
Roof	Asphalt Shingle
Construction	Concrete, Mixed, Vinyl Siding
Foundation	Poured Concrete

Additional Information

Date Listed	April 16th, 2025
Days on Market	9
Zoning	R-1PRL

Listing Details

Listing Office	eXp Realty
----------------	------------

Data is supplied by Pillar 9â„¢ MLSÂ® System. Pillar 9â„¢ is the owner of the copyright in its MLSÂ® System. Data is deemed reliable but is not guaranteed accurate by Pillar 9â„¢. The trademarks MLSÂ®, Multiple Listing ServiceÂ® and the associated logos are owned by The Canadian Real Estate Association (CREA) and identify the quality of services provided by real estate professionals who are members of CREA. Used under license.