

\$3,300,000 - 6740 Cedar Way, Innisfail

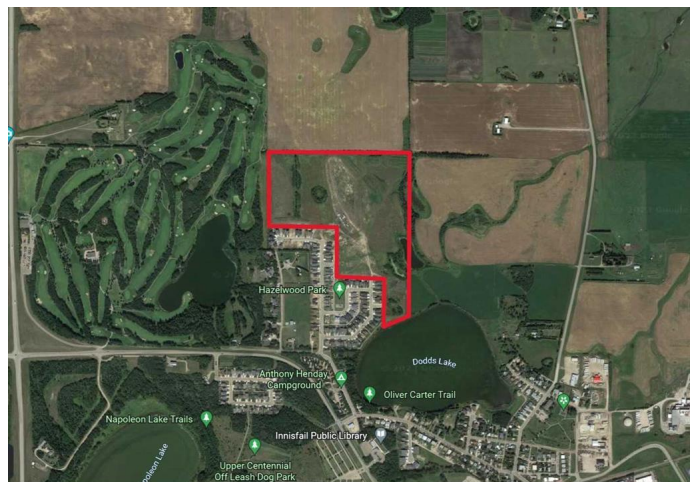
MLS® #A2210078

\$3,300,000

0 Bedroom, 0.00 Bathroom,
Land on 55.10 Acres

Hazelwood Estates, Innisfail, Alberta

Turn-key 55.1-acre Residential Development Parcel with 262 +/- residential single and multi-family lots ready to be built out. Hazelwood Estates is the Premier Community in Innisfail that is an integral part of Innisfail's North Area Structure Plan (NASP) that town council is focused on growing. Innisfail is an Energized Community, and this development allows you to start building immediately. This parcel features the new school site with Executive lots backing onto the Prestigious Innisfail Golf Club and Dodds Lake. Located just 20 minutes from Red Deer and 60 minutes to Calgary, Innisfail is a hot bed for extensive growth and poised to be a Big Part of Alberta's Expanding Future.



Essential Information

| | |
|-----------|------------------|
| MLS® # | A2210078 |
| Price | \$3,300,000 |
| Bathrooms | 0.00 |
| Acres | 55.10 |
| Type | Land |
| Sub-Type | Residential Land |
| Status | Active |

Community Information

| | |
|-------------|-------------------|
| Address | 6740 Cedar Way |
| Subdivision | Hazelwood Estates |

| | |
|-------------|-----------------|
| City | Innisfail |
| County | Red Deer County |
| Province | Alberta |
| Postal Code | T4G 0A5 |

Additional Information

| | |
|----------------|-----------------|
| Date Listed | April 9th, 2025 |
| Days on Market | 153 |
| Zoning | RD |

Listing Details

| | |
|----------------|----------------------------------|
| Listing Office | Century 21 All Stars Realty Ltd. |
|----------------|----------------------------------|

Data is supplied by Pillar 9â„¢ MLSÂ® System. Pillar 9â„¢ is the owner of the copyright in its MLSÂ® System. Data is deemed reliable but is not guaranteed accurate by Pillar 9â„¢. The trademarks MLSÂ®, Multiple Listing ServiceÂ® and the associated logos are owned by The Canadian Real Estate Association (CREA) and identify the quality of services provided by real estate professionals who are members of CREA. Used under license.