

\$589,999 - 588 Lawthorn Way Se, Airdrie

MLS® #A2209124

\$589,999

4 Bedroom, 4.00 Bathroom, 1,323 sqft

Residential on 0.06 Acres

Lanark, Airdrie, Alberta

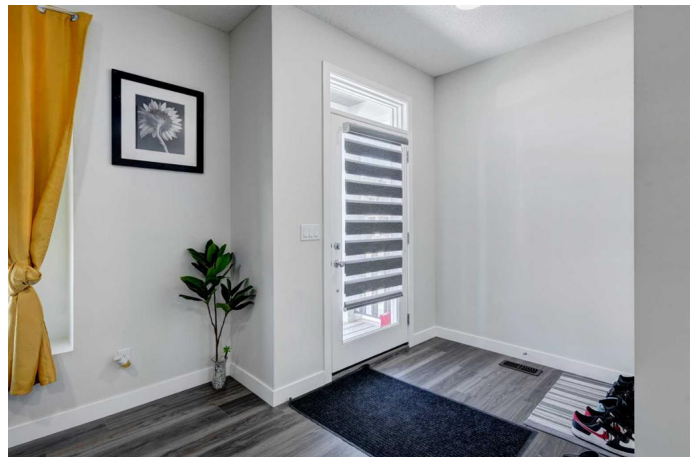
This beautifully upgraded 4 bed, 3.5 bath 2-storey home offers incredible value with a separate side entrance—perfect for a future legal suite (subject to approval and permitting by the city or municipality) or multi-generational living. Located in a family-friendly neighborhood, this home features an open-concept main floor with 9’™ knock-down ceilings and luxury vinyl plank flooring throughout.

The chef-inspired kitchen shines with quartz countertops, full-height cabinetry, upgraded stainless steel appliances, pots and pans drawers, and designer tilework—flowing seamlessly into the dining and living areas, ideal for entertaining. A stylish powder room and mudroom complete the main level.

Upstairs, you'll find a spacious primary retreat with an upgraded ensuite and walk-in closet, plus two additional large bedrooms, a full 4-piece bath, upper-floor laundry, and built-in storage.

The professionally finished basement, completed by the builder, includes a fourth bedroom, full bathroom, large rec room, and a second laundry area—ready to convert into a private suite thanks to the side entrance.

Outside, enjoy a fully fenced and landscaped backyard with a deck—perfect for summer gatherings. A double detached garage adds



convenience and value.

This home is move-in ready with incredible suite potentialâ€”ideal for homeowners, investors, or anyone looking to offset their mortgage with rental income.

Built in 2022

Essential Information

| | |
|----------------|------------------------|
| MLS® # | A2209124 |
| Price | \$589,999 |
| Bedrooms | 4 |
| Bathrooms | 4.00 |
| Full Baths | 3 |
| Half Baths | 1 |
| Square Footage | 1,323 |
| Acres | 0.06 |
| Year Built | 2022 |
| Type | Residential |
| Sub-Type | Semi Detached |
| Style | 2 Storey, Side by Side |
| Status | Active |

Community Information

| | |
|-------------|---------------------|
| Address | 588 Lawthorn Way Se |
| Subdivision | Lanark |
| City | Airdrie |
| County | Airdrie |
| Province | Alberta |
| Postal Code | T4A 3P1 |

Amenities

| | |
|----------------|------------------------|
| Parking Spaces | 2 |
| Parking | Double Garage Detached |
| # of Garages | 2 |

Interior

| | |
|-------------------|--|
| Interior Features | Breakfast Bar, Closet Organizers, Kitchen Island, No Smoking Home, |
|-------------------|--|

| | |
|--------------|--|
| | Open Floorplan, Quartz Counters, Recessed Lighting, Separate Entrance, Storage, Vinyl Windows, Walk-In Closet(s) |
| Appliances | Dishwasher, Dryer, Electric Oven, Microwave, Range Hood, Refrigerator, Washer, Washer/Dryer, Window Coverings |
| Heating | Forced Air, Natural Gas |
| Cooling | None |
| Has Basement | Yes |
| Basement | Finished, Full |

Exterior

| | |
|-------------------|----------------------------------|
| Exterior Features | Lighting, Private Yard |
| Lot Description | Back Lane, Back Yard, Front Yard |
| Roof | Asphalt |
| Construction | Vinyl Siding, Wood Frame |
| Foundation | Poured Concrete |

Additional Information

| | |
|----------------|-----------------|
| Date Listed | April 9th, 2025 |
| Days on Market | 37 |
| Zoning | R2 |

Listing Details

| | |
|----------------|------------------------|
| Listing Office | Royal LePage Benchmark |
|----------------|------------------------|

Data is supplied by Pillar 9â„¢ MLS® System. Pillar 9â„¢ is the owner of the copyright in its MLS® System. Data is deemed reliable but is not guaranteed accurate by Pillar 9â„¢. The trademarks MLS®, Multiple Listing Service® and the associated logos are owned by The Canadian Real Estate Association (CREA) and identify the quality of services provided by real estate professionals who are members of CREA. Used under license.