

\$769,900 - 227 Hawkmere View, Chestermere

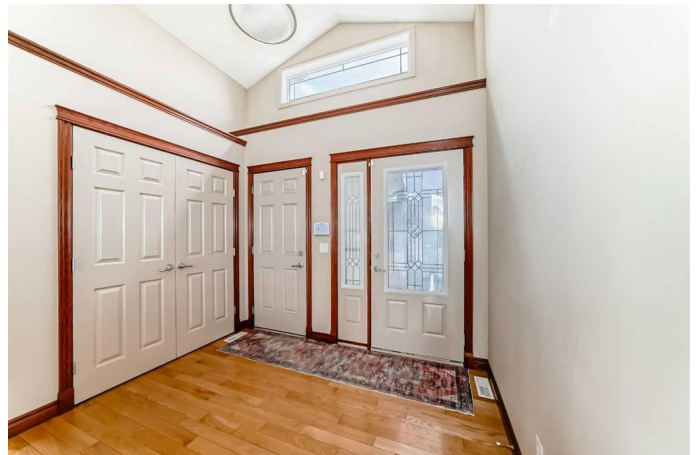
MLS® #A2207315

\$769,900

3 Bedroom, 3.00 Bathroom, 1,438 sqft
Residential on 0.14 Acres

Westmere, Chestermere, Alberta

227 Hawkmere View! Welcome to your charming bungalow retreat offering a perfect blend of style and functionality! This inviting home spans 1438 sq ft of main-floor living space and an additional 1172 sq ft in the fully finished basement with a walkout, providing a total of over 2600 sq ft of comfortable living. On the main floor, the welcoming entrance flows into a bright living area featuring beautiful hardwood floors in the entrance, kitchen, dining room, and hallwaysâ€”accented by a striking brick facing feature fireplace. The vaulted ceiling adds to the spacious feel, while the Primary Bedroom offers a luxurious 5-piece ensuite and a generous walk-in closet. A cozy front office provides a perfect space for working from home. Descend to the basement where you'll discover dual living areasâ€”a family room and a separate living room highlighted by a charming mantled fireplace. This level also boasts two additional bedrooms, a wet bar, and a cellar, making it ideal for entertaining or family movie nights. Additional functional spaces include a main floor laundry room and a two piece powder room! Step outside to your sun-drenched, west-facing backyard featuring a spacious back deck and a gazebo, perfect for outdoor relaxation and entertaining. Other notable features include central vac, and an attached oversized 2-car garage with extra side space for storage or easier vehicle access. Don't miss out. Schedule your showing!



Built in 2005

Essential Information

| | |
|----------------|-------------|
| MLS® # | A2207315 |
| Price | \$769,900 |
| Bedrooms | 3 |
| Bathrooms | 3.00 |
| Full Baths | 2 |
| Half Baths | 1 |
| Square Footage | 1,438 |
| Acres | 0.14 |
| Year Built | 2005 |
| Type | Residential |
| Sub-Type | Detached |
| Style | Bungalow |
| Status | Active |

Community Information

| | |
|-------------|-------------------|
| Address | 227 Hawkmere View |
| Subdivision | Westmere |
| City | Chestermere |
| County | Chestermere |
| Province | Alberta |
| Postal Code | T1X 1T8 |

Amenities

| | |
|----------------|-----------------------------------|
| Parking Spaces | 4 |
| Parking | Double Garage Attached, Oversized |
| # of Garages | 2 |

Interior

| | |
|-------------------|--|
| Interior Features | Built-in Features, Ceiling Fan(s), Central Vacuum, Vaulted Ceiling(s), Wet Bar |
| Appliances | Central Air Conditioner, Dishwasher, Electric Stove, Garage Control(s), Microwave Hood Fan, Refrigerator, Washer/Dryer, Window Coverings |
| Heating | Fireplace(s), Forced Air |
| Cooling | Central Air |
| Fireplace | Yes |
| # of Fireplaces | 2 |

| | |
|--------------|---------------------------|
| Fireplaces | Gas, Brick Facing, Mantle |
| Has Basement | Yes |
| Basement | Finished, Full, Walk-Out |

Exterior

| | |
|-------------------|--|
| Exterior Features | BBQ gas line, Private Entrance, Private Yard |
| Lot Description | Landscaped, Low Maintenance Landscape, Rectangular Lot, Gazebo |
| Roof | Asphalt Shingle |
| Construction | Brick, Vinyl Siding |
| Foundation | Poured Concrete |

Additional Information

| | |
|----------------|-----------------|
| Date Listed | April 4th, 2025 |
| Days on Market | 21 |
| Zoning | R-1 |

Listing Details

| | |
|----------------|---------------------------------|
| Listing Office | Stonemere Real Estate Solutions |
|----------------|---------------------------------|

Data is supplied by Pillar 9â„¢ MLSÂ® System. Pillar 9â„¢ is the owner of the copyright in its MLSÂ® System. Data is deemed reliable but is not guaranteed accurate by Pillar 9â„¢. The trademarks MLSÂ®, Multiple Listing ServiceÂ® and the associated logos are owned by The Canadian Real Estate Association (CREA) and identify the quality of services provided by real estate professionals who are members of CREA. Used under license.