

\$245,000 - 1p, 515 6 Street S, Lethbridge

MLS® #A2200095

\$245,000

2 Bedroom, 2.00 Bathroom, 1,422 sqft

Residential on 0.00 Acres

Downtown, Lethbridge, Alberta

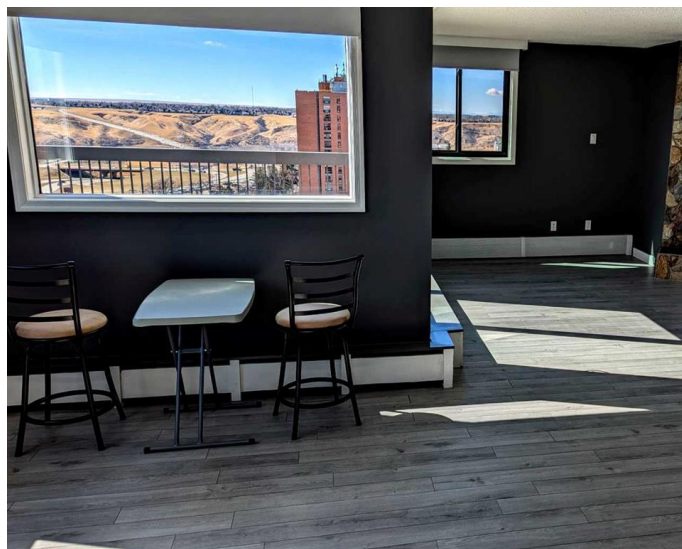
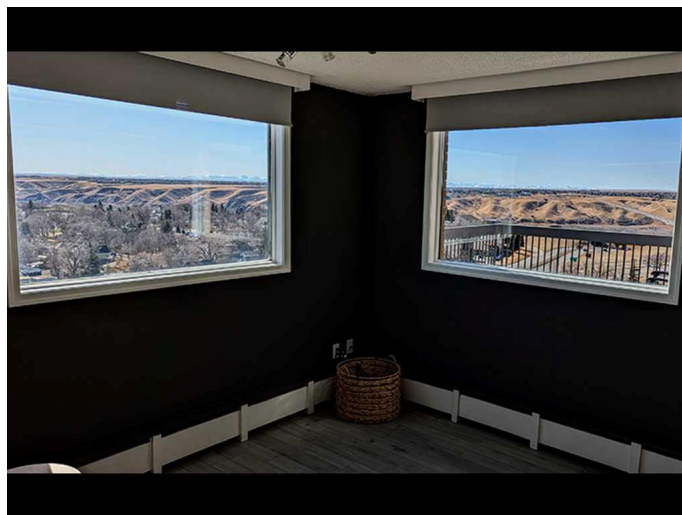
Discover vibrant downtown penthouse living in one of only four exclusive top-floor suites, offering over 1400 sqft of elegantly renovated space with breathtaking city, mountain, and coulee views—including the iconic High Level Bridge. This coveted SW corner unit boasts one of the highest balconies in the city, complete with a gas line for effortless BBQ gatherings. Inside, a spacious, light-filled interior features an updated kitchen, a brand-new gas fireplace, and a luxurious master bedroom with a large walk-in closet and an ensuite complete with a jetted tub. Enjoy the convenience of in-suite laundry—available exclusively in the penthouses—and two secured, covered parking stalls with direct elevator access right outside your door. Located within walking distance of the best restaurants, retail shops, Festival Square events, and key cultural spots like the downtown library, Yates Theatre, and live music venues, vibrant downtown living has never been more accessible. The building has recently undergone major mechanical upgrades, including upgraded boilers and AC chiller units, new elevators, and security enhancements completed in 2024, which add exceptional value and peace of mind.

Built in 1980

Essential Information

MLS® #

A2200095



| | |
|----------------|-------------|
| Price | \$245,000 |
| Bedrooms | 2 |
| Bathrooms | 2.00 |
| Full Baths | 2 |
| Square Footage | 1,422 |
| Acres | 0.00 |
| Year Built | 1980 |
| Type | Residential |
| Sub-Type | Apartment |
| Style | Penthouse |
| Status | Active |

Community Information

| | |
|-------------|--------------------|
| Address | 1p, 515 6 Street S |
| Subdivision | Downtown |
| City | Lethbridge |
| County | Lethbridge |
| Province | Alberta |
| Postal Code | T1J 4J1 |

Amenities

| | |
|----------------|---|
| Amenities | Bicycle Storage, Coin Laundry, Elevator(s), Fitness Center, Recreation Room, Sauna, Secured Parking, Storage, Trash |
| Parking Spaces | 2 |
| Parking | Assigned, Parkade |

Interior

| | |
|-------------------|---|
| Interior Features | Double Vanity, Storage |
| Appliances | Dishwasher, Electric Stove, Microwave, Refrigerator, Washer/Dryer |
| Heating | Natural Gas, Radiant |
| Cooling | Central Air |
| Fireplace | Yes |
| # of Fireplaces | 1 |
| Fireplaces | Gas |
| # of Stories | 14 |

Exterior

| | |
|-------------------|-----------------|
| Exterior Features | BBQ gas line |
| Construction | Brick, Concrete |

Additional Information

| | |
|----------------|-----------------|
| Date Listed | March 7th, 2025 |
| Days on Market | 110 |
| Zoning | C-D |

Listing Details

Listing Office SUTTON GROUP - LETHBRIDGE

Data is supplied by Pillar 9â„¢ MLS® System. Pillar 9â„¢ is the owner of the copyright in its MLS® System. Data is deemed reliable but is not guaranteed accurate by Pillar 9â„¢. The trademarks MLS®, Multiple Listing Service® and the associated logos are owned by The Canadian Real Estate Association (CREA) and identify the quality of services provided by real estate professionals who are members of CREA. Used under license.