

\$89,500 - 1 652051 Range Road 224, Rural Athabasca County

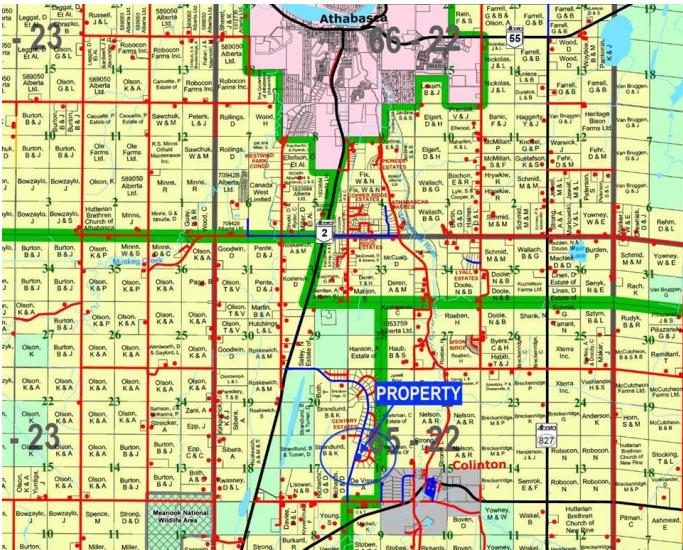
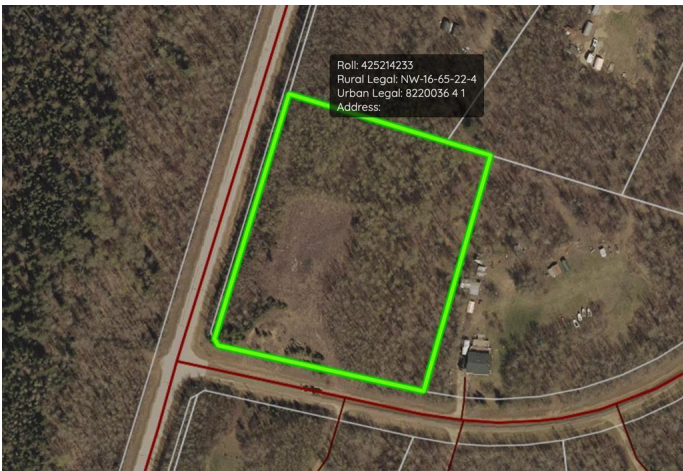
MLS® #A2195429

\$89,500

0 Bedroom, 0.00 Bathroom,
Land on 3.81 Acres

Century Estates_CATH, Rural Athabasca County, Alberta

Desirable location only a few minutes south of Athabasca with 3.18 acres. Lot is heavily treed and hilly with excellent drainage. Yard site has been recently cleared and is ready for development. Zoned Country Residential with no restrictive covenants to limit your development options. Close proximity to over 1400 acres of crown land. Fibre internet, natural gas and power run along the property line.



Essential Information

MLS® #	A2195429
Price	\$89,500
Bathrooms	0.00
Acres	3.81
Type	Land
Sub-Type	Residential Land
Status	Active

Community Information

Address	1 652051 Range Road 224
Subdivision	Century Estates_CATH
City	Rural Athabasca County
County	Athabasca County
Province	Alberta
Postal Code	T9S 1P6

Additional Information

Date Listed	February 17th, 2025
Days on Market	77
Zoning	CR

Listing Details

Listing Office	3% REALTY PROGRESS
----------------	--------------------

Data is supplied by Pillar 9â„¢ MLS® System. Pillar 9â„¢ is the owner of the copyright in its MLS® System. Data is deemed reliable but is not guaranteed accurate by Pillar 9â„¢. The trademarks MLS®, Multiple Listing Service® and the associated logos are owned by The Canadian Real Estate Association (CREA) and identify the quality of services provided by real estate professionals who are members of CREA. Used under license.