

\$15 - 110, 2880 107 Avenue Se, Calgary

MLS® #A2192453

\$15

0 Bedroom, 0.00 Bathroom,
Commercial on 1.89 Acres

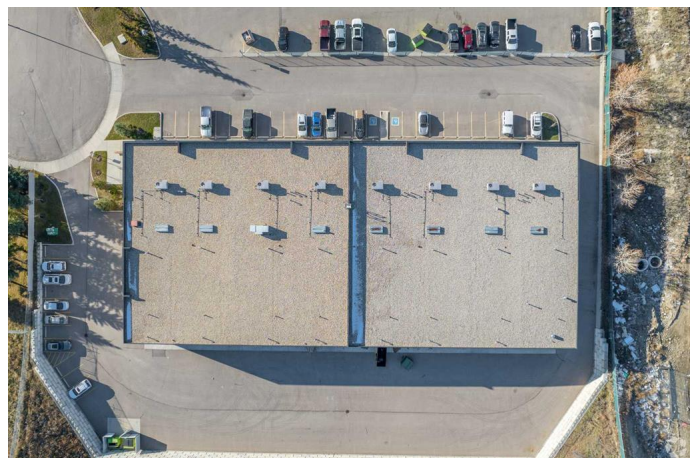
Shepard Industrial, Calgary, Alberta

This 3,680 SF industrial warehouse offers a functional layout with 115 ft depth by 32 ft width and a 75 ft clear loading area at the rear, making it ideal for warehousing, distribution, or light manufacturing. The front office space includes three private offices, a reception area, a kitchenette, and a washroom, providing a professional workspace alongside warehouse operations. Built in 2014, this well-maintained property is located in a prime SE industrial area, offering easy access to Barlow Trail SE, Deerfoot Trail SE, and 114th Avenue SE. Its strategic location ensures seamless transportation and logistics, making it a great opportunity for businesses looking to establish or expand their operations. With a modern design and excellent accessibility, this space is well-suited for a variety of industrial uses. Donâ€™t miss out on this outstanding opportunityâ€”contact us today for more details or to schedule a viewing!

Built in 2013

Essential Information

MLS® #	A2192453
Price	\$15
Bathrooms	0.00
Acres	1.89
Year Built	2013
Type	Commercial
Sub-Type	Industrial



Status	Active
--------	--------

Community Information

Address	110, 2880 107 Avenue Se
Subdivision	Shepard Industrial
City	Calgary
County	Calgary
Province	Alberta
Postal Code	T2Z3R7

Additional Information

Date Listed	February 4th, 2025
Days on Market	91
Zoning	I-G

Listing Details

Listing Office	CDN Global Advisors Ltd.
----------------	--------------------------

Data is supplied by Pillar 9â„¢ MLS® System. Pillar 9â„¢ is the owner of the copyright in its MLS® System. Data is deemed reliable but is not guaranteed accurate by Pillar 9â„¢. The trademarks MLS®, Multiple Listing Service® and the associated logos are owned by The Canadian Real Estate Association (CREA) and identify the quality of services provided by real estate professionals who are members of CREA. Used under license.