

\$389,000 - 150 Pinnacle Drive, Grande Prairie

MLS® #A2191343

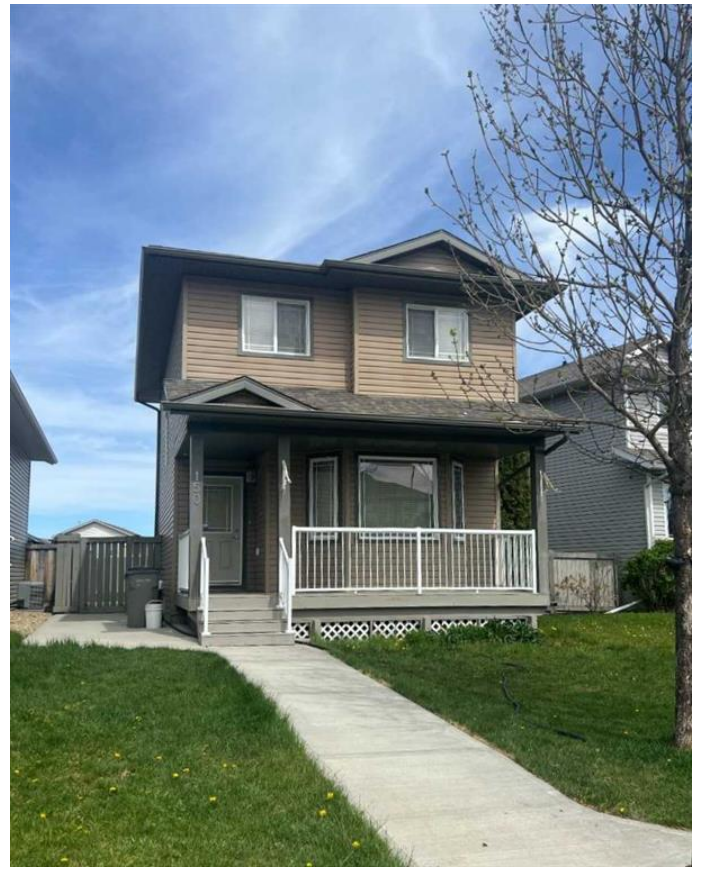
\$389,000

4 Bedroom, 3.00 Bathroom, 1,265 sqft
Residential on 0.11 Acres

Pinnacle Ridge., Grande Prairie, Alberta

IMMEDIATE POSSESSION POSSIBLE!

Enjoy the upcoming summer in your new home! Speaking of the big heat soon to be on the way, the air conditioning will be your first checked off list item at this property. Or maybe the large & cute front covered veranda with white metal railing giving curb appeal will win your heart. Or how about this fully-finished, 4 bedroom, 2.5 bathroom 2 storey has just been freshly painted inside? Need more incentives? Okay! Off the front entry is the living room with bay windows and attractive corner gas fireplace. Kitchen has nice flooring, plenty of white cabinets along with stainless steel appliances, island, corner pantry, and side ledge that would be a great coffee or gadget charging station. Dining area also has bay windows, and off of it, there is a half bathroom by the back door to the deck. Upstairs, the primary bedroom has direct access to the main bathroom, plus there are 2 more bedrooms & hall closet on this level. Downstairs has 1 big bedroom, full bathroom, flex room space that would make for a great office or playroom, and the furnace/laundry room. Whole home is in a nice, neutral colour palette making decorating a breeze. Fenced backyard has huge deck with clear panels and white metal railing, plant boxes and extended, extra-wide concrete sidewalks. Less grass to cut and clean walk ways for your shoes. There is ample space to build a detached double garage, too! Gravelled parking pad currently at rear of home with back alley



access. Great west end location close to Ecole Nouvelle Frontiere, parks & playgrounds, Pinnacle Lake & walking trails plus the City's awesome shopping and restaurant options. Take advantage of ALL these features, and contact a REALTOR® today for more information or to view.

Built in 2005

Essential Information

| | |
|----------------|-------------|
| MLS® # | A2191343 |
| Price | \$389,000 |
| Bedrooms | 4 |
| Bathrooms | 3.00 |
| Full Baths | 2 |
| Half Baths | 1 |
| Square Footage | 1,265 |
| Acres | 0.11 |
| Year Built | 2005 |
| Type | Residential |
| Sub-Type | Detached |
| Style | 2 Storey |
| Status | Active |

Community Information

| | |
|-------------|--------------------|
| Address | 150 Pinnacle Drive |
| Subdivision | Pinnacle Ridge. |
| City | Grande Prairie |
| County | Grande Prairie |
| Province | Alberta |
| Postal Code | T8W 2Z3 |

Amenities

| | |
|----------------|--|
| Utilities | Sewer Connected, Electricity Connected, Natural Gas Connected, Water Connected |
| Parking Spaces | 2 |
| Parking | Parking Pad, Alley Access, Outside, See Remarks |

Interior

Interior Features Ceiling Fan(s), Kitchen Island, Track Lighting
Appliances Dishwasher, Refrigerator, Dryer
Heating Forced Air, Natural Gas
Cooling Central Air
Fireplace Yes
of Fireplaces 1
Fireplaces Gas, Living Room
Has Basement Yes
Basement Finished, Full



Exterior

Exterior Features Other
Lot Description Landscaped, Back Lane, Few Trees, Irregular Lot, Lawn
Roof Asphalt Shingle
Construction Wood Frame, Vinyl Siding
Foundation Poured Concrete

Additional Information

Date Listed May 16th, 2025
Days on Market 7
Zoning RS

Listing Details

Listing Office Royal LePage - The Realty Group

Data is supplied by Pillar 9â„¢ MLSÂ® System. Pillar 9â„¢ is the owner of the copyright in its MLSÂ® System. Data is deemed reliable but is not guaranteed accurate by Pillar 9â„¢. The trademarks MLSÂ®, Multiple Listing ServiceÂ® and the associated logos are owned by The Canadian Real Estate Association (CREA) and identify the quality of services provided by real estate professionals who are members of CREA. Used under license.