

\$155,000 - 113, 67417 Mcgrane Road Road, Lac La Biche

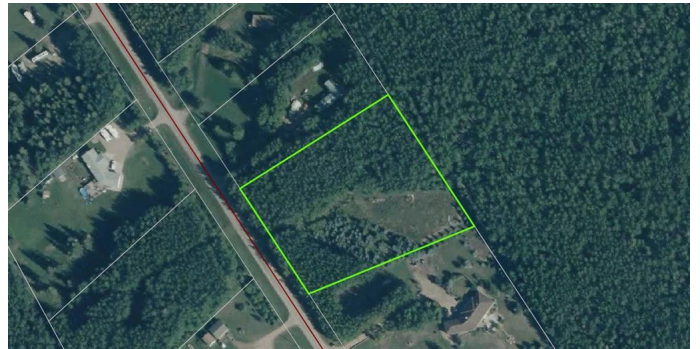
MLS® #A2190557

\$155,000

0 Bedroom, 0.00 Bathroom,
Land on 2.48 Acres

Lac La Biche, Lac La Biche, Alberta

2.48 acre country residential lot mostly treed in Mission Village Phase I with municipal water and sewers available at property line. Only minutes to Lac La Biche on paved road. Direct access to paved walking trail along Mission Road and short distance to beautiful Lac La Biche lake with year round recreational and fishing opportunities. Great place for your next home or camping spot. Large lot will easily accommodate out buildings and workshop.



Essential Information

| | |
|-----------|------------------|
| MLS® # | A2190557 |
| Price | \$155,000 |
| Bathrooms | 0.00 |
| Acres | 2.48 |
| Type | Land |
| Sub-Type | Residential Land |
| Status | Active |

Community Information

| | |
|-------------|------------------------------|
| Address | 113, 67417 Mcgrane Road Road |
| Subdivision | Lac La Biche |
| City | Lac La Biche |
| County | Lac La Biche County |
| Province | Alberta |
| Postal Code | T0A2C2 |

Additional Information

| | |
|----------------|--------------------|
| Date Listed | January 29th, 2025 |
| Days on Market | 120 |
| Zoning | CR |

Listing Details

| | |
|----------------|---------------------------------|
| Listing Office | CENTURY 21 LAKELAND REAL ESTATE |
|----------------|---------------------------------|

Data is supplied by Pillar 9â„¢ MLS® System. Pillar 9â„¢ is the owner of the copyright in its MLS® System. Data is deemed reliable but is not guaranteed accurate by Pillar 9â„¢. The trademarks MLS®, Multiple Listing Service® and the associated logos are owned by The Canadian Real Estate Association (CREA) and identify the quality of services provided by real estate professionals who are members of CREA. Used under license.