

\$275,000 - 225 Elevator Road, Trochu

MLS® #A2184035

\$275,000

0 Bedroom, 0.00 Bathroom,
Commercial on 0.59 Acres

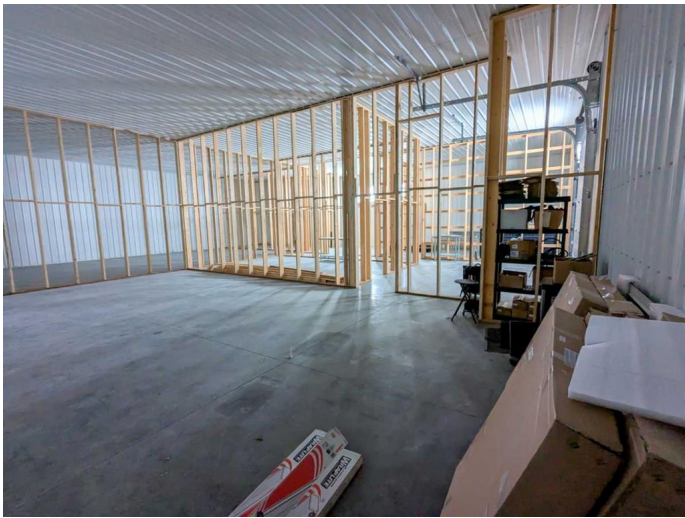
NONE, Trochu, Alberta

â€¢ Prime Investment Opportunity in Trochu, Alberta â€¢ Light Industrial Shop â€¢ Discover the potential of this partially completed light industrial shop on the east side of Trochu, Alberta. This versatile 3,600 sq. ft. metal-clad building, with a 14-foot-high metal ceiling and partition framing, offers endless customization options for warehouse distribution, retail supply, agricultural services, and more. â€¢ The structure includes two 3-foot entry doors and a 10' x 10' overhead cargo door for efficient loading. The expansive 135â€™ x 185â€™ lot features a front setback for ample parking and additional space for yard storage or future expansion. â€¢ This property is an ideal investment for entrepreneurs and business owners looking to establish or grow their operations. Seize the opportunity to create a commercial space tailored to your needs in Trochuâ€™s growing industrial sector!

Built in 2023

Essential Information

MLS® #	A2184035
Price	\$275,000
Bathrooms	0.00
Acres	0.59
Year Built	2023
Type	Commercial
Sub-Type	Industrial



Status Active

Community Information

Address 225 Elevator Road
Subdivision NONE
City Trochu
County Kneehill County
Province Alberta
Postal Code T0M2C0

Additional Information

Date Listed December 18th, 2024
Days on Market 189
Zoning M-1 Industial

Listing Details

Listing Office Big Earth Realty

Data is supplied by Pillar 9â„¢ MLS® System. Pillar 9â„¢ is the owner of the copyright in its MLS® System. Data is deemed reliable but is not guaranteed accurate by Pillar 9â„¢. The trademarks MLS®, Multiple Listing Service® and the associated logos are owned by The Canadian Real Estate Association (CREA) and identify the quality of services provided by real estate professionals who are members of CREA. Used under license.