

\$1,088,888 - Water Valley, Rural Mountain View County

MLS® #A2183073

\$1,088,888

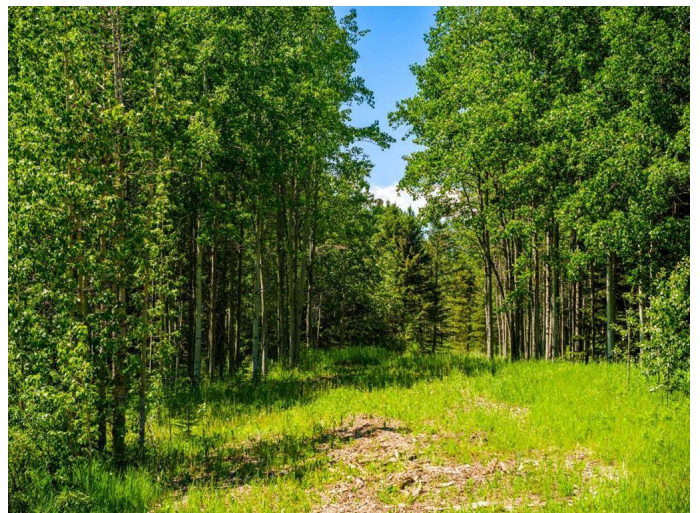
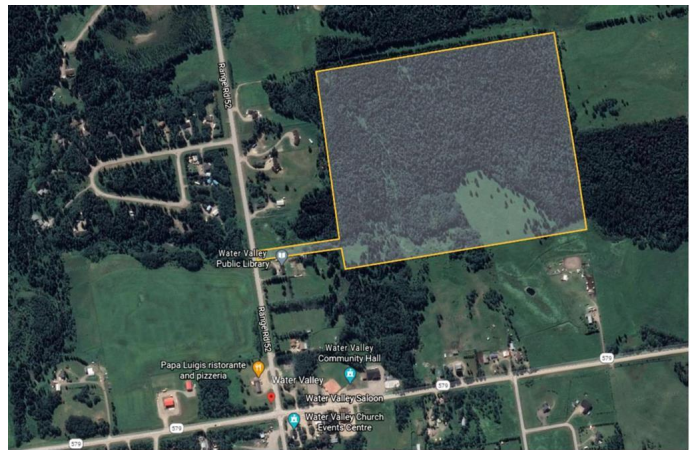
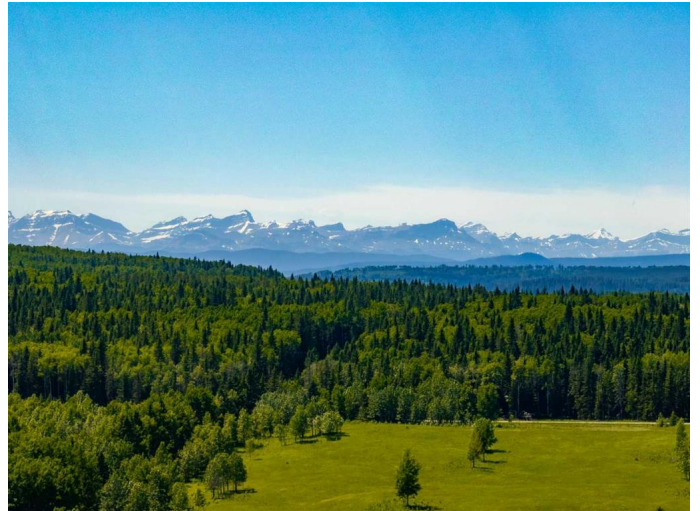
0 Bedroom, 0.00 Bathroom,
Land on 74.92 Acres

Watervalley, Rural Mountain View County,
Alberta

Discover the limitless potential of this breathtaking 74.9-acre property in the charming community of Water Valley, AB. This incredible property offers a harmonious blend of towering trees and wide-open meadows, creating a peaceful, natural environment that's™s ready for your vision to take shape. With zoning that allows for both agricultural and residential use, the opportunities for this land are vast. Buyers are encouraged to check with Mountain View County to understand the full scope of potential uses.

The property is easily accessible with a panhandle entrance from the main paved road, leading you through a picturesque, tree-lined pathway. Two drilled water wells are conveniently located near the centre of the land, offering an essential resource for any future plans. The mix of wooded areas and meadows provides the perfect balance of seclusion and open space, allowing for a wide range of potential uses.

For those looking for a private escape or an investment in the future, this property offers an unparalleled opportunity. It's™s being sold "as-is," offering the freedom to design and develop according to your vision. The serene environment and versatile zoning make this a rare and coveted piece of real estate in the Water Valley area. Don't™t miss the chance to own your own slice of paradise â€” contact



your Realtor today to schedule a walkthrough and experience the potential this incredible property has to offer.

Essential Information

MLS® #	A2183073
Price	\$1,088,888
Bathrooms	0.00
Acres	74.92
Type	Land
Sub-Type	Residential Land
Status	Active

Community Information

Address	Water Valley
Subdivision	Watervalley
City	Rural Mountain View County
County	Mountain View County
Province	Alberta
Postal Code	T0M 2E0

Exterior

Exterior Features	Private Entrance
Lot Description	Level, Many Trees, Meadow, Native Plants, Near Golf Course, Private, Square Shaped Lot, Treed

School Information

District	Chinook's Edge School Division No. 73
----------	---------------------------------------

Additional Information

Date Listed	January 15th, 2025
Days on Market	161
Zoning	Part AG & Part CR

Listing Details

Listing Office	Royal LePage Benchmark
----------------	------------------------

Data is supplied by Pillar 9â„¢ MLSÂ® System. Pillar 9â„¢ is the owner of the copyright in its MLSÂ® System. Data is deemed reliable but is not guaranteed accurate by Pillar 9â„¢. The trademarks MLSÂ®, Multiple Listing ServiceÂ® and the associated logos are owned by The Canadian Real Estate Association (CREA) and identify the quality of services

provided by real estate professionals who are members of CREA. Used under license.