

\$215,000 - 670 Center Street, Drumheller

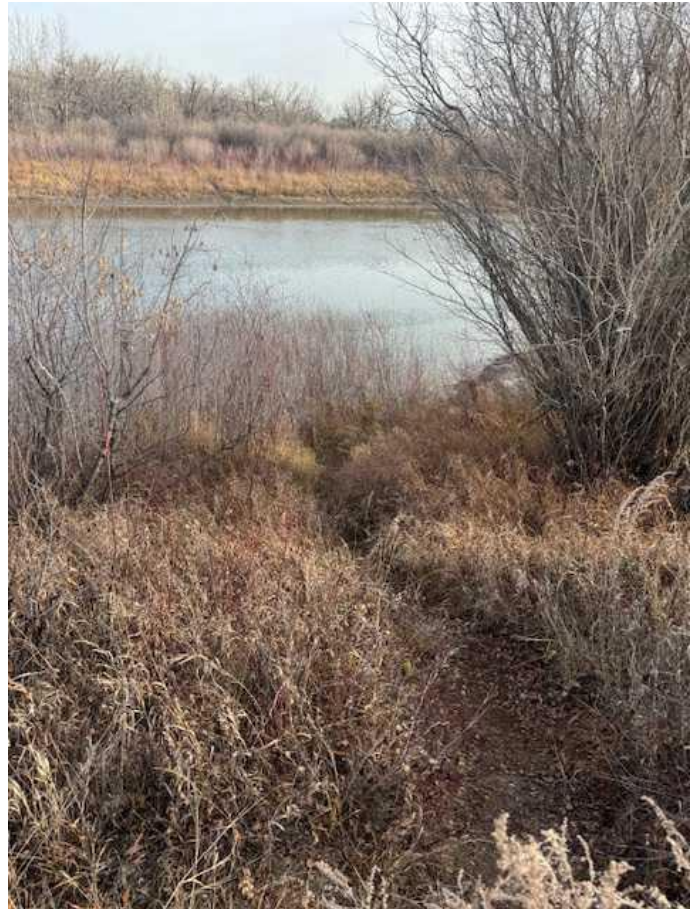
MLS® #A2179461

\$215,000

0 Bedroom, 0.00 Bathroom,
Land on 2.05 Acres

Cambria, Drumheller, Alberta

An exceptional opportunity exists to acquire a premium riverfront parcel in Dinosaur Valley. The property is conveniently located 15 minutes from Drumheller's central business district and 1 hour 15 minutes from the Calgary metropolitan area. The site features panoramic vistas of the coulees and Hoodoos and offers substantial development and investment prospects. The land is zoned to permit residential construction, subdivision, campground development, or the construction of tiny homes, subject to municipal approval. Infrastructure utilities are readily accessible at the property line, and vendor financing is available. This offering is ideally suited for those seeking to construct a bespoke residence or to make a strategic real estate investment.



Property Highlights

Location: Dinosaur Valley, 15 minutes from Drumheller, 1 hour 15 minutes from Calgary.

Views: Unobstructed views of coulees and Hoodoos.

Zoning: Permitted uses include residential development, subdivision, campgrounds, or tiny homes (subject to municipal approval).

Utilities: Municipal water, gas, and electricity available at the property line.

Access: Situated between 7th Avenue (cul-de-sac) and 6th Avenue (leading to river access).

Historical Significance: Site includes a portion of a former mining operation.

Financing: Vendor offers 80% financing, amortized over 25 years with a 5-year term.

Investment Merits

Development Potential: Options include single-family dwelling, land subdivision, campground development, or tiny home community.

Market Scarcity: Riverfront parcels are increasingly rare in the region.

Strategic Location: Proximity to Drumheller and Calgary enhances property value.

Location Information

The property is bounded by 7th Avenue, which terminates in a cul-de-sac, and 6th Avenue, which provides direct access to the river.

Property is also part of the Cambria community which is part of Drumheller.

Historical Context

The property encompasses a segment of a historical mining site, with an on-site historical marker.



Essential Information

MLS® #	A2179461
Price	\$215,000
Bathrooms	0.00
Acres	2.05
Type	Land
Sub-Type	Residential Land
Status	Active

Community Information

Address	670 Center Street
Subdivision	Cambria
City	Drumheller
County	Drumheller

Province Alberta
Postal Code T0J0Y9

Amenities

Is Waterfront Yes
Waterfront River Access, River Front, See Remarks

Exterior

Exterior Features Playground
Lot Description Creek/River/Stream/Pond, See Remarks, Street Lighting, Views,
Wetlands, Waterfront

Additional Information

Date Listed November 15th, 2024
Days on Market 166
Zoning Neighborhood District

Listing Details

Listing Office Real Estate Professionals Inc.

Data is supplied by Pillar 9â„¢ MLS® System. Pillar 9â„¢ is the owner of the copyright in its MLS® System. Data is deemed reliable but is not guaranteed accurate by Pillar 9â„¢. The trademarks MLS®, Multiple Listing Service® and the associated logos are owned by The Canadian Real Estate Association (CREA) and identify the quality of services provided by real estate professionals who are members of CREA. Used under license.