

# \$630,000 - 101, 5300 60 Street, Sylvan Lake

MLS® #A2177777

## \$630,000

3 Bedroom, 3.00 Bathroom, 1,346 sqft  
Residential on 0.16 Acres

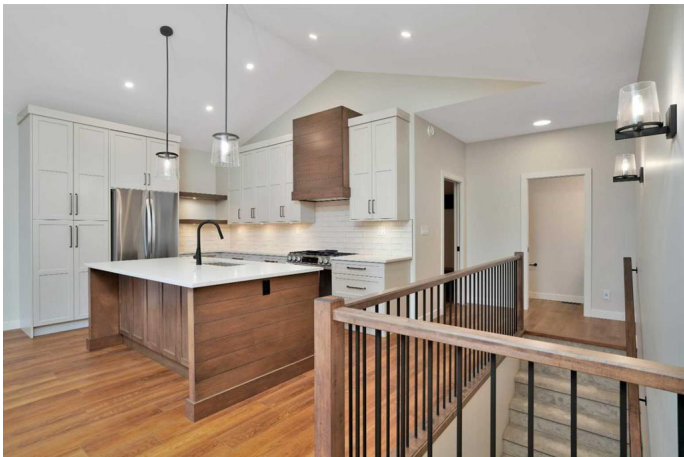
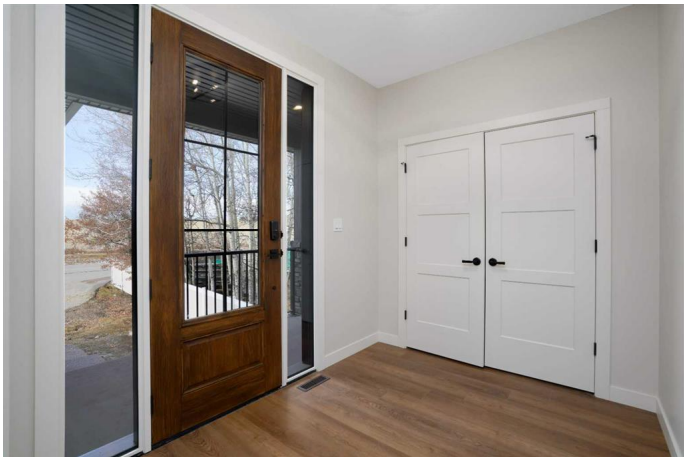
Westpine Estates, Sylvan Lake, Alberta

Welcome to your dream home! This Executive style duplex boasts a 1,421 sq foot open plan with luxury vinyl plank wood grain finishes, you'll be greeted by soaring vaulted ceilings with spacious living room, a stunning stone fireplace perfect for relaxation and entertaining. This Sorento show home features triple-pane windows, allowing natural light to flood the interiors while providing exceptional energy efficiency and noise reduction. The stunning kitchen showcasing beautiful quartz countertops, custom cabinetry, and top-of-the-line appliances. The spacious primary bedroom with an amazing 5 pc ensuite and large walk in closet. The fully finished basement features a large family room with 2 bedrooms and walks out onto an amazing backyard.

Built in 2024

## Essential Information

MLS® #	A2177777
Price	\$630,000
Bedrooms	3
Bathrooms	3.00
Full Baths	2
Half Baths	1
Square Footage	1,346
Acres	0.16



Year Built	2024
Type	Residential
Sub-Type	Semi Detached
Style	Bungalow, Side by Side
Status	Active

### Community Information

Address	101, 5300 60 Street
Subdivision	Westpine Estates
City	Sylvan Lake
County	Red Deer County
Province	Alberta
Postal Code	T4S 0K8

### Amenities

Amenities	None
Parking Spaces	2
Parking	Double Garage Attached
# of Garages	2

### Interior

Interior Features	High Ceilings, Kitchen Island, No Animal Home, No Smoking Home, Open Floorplan, Vinyl Windows, Quartz Counters
Appliances	Dishwasher, Microwave, Refrigerator, Range
Heating	Forced Air
Cooling	None
Fireplace	Yes
# of Fireplaces	1
Fireplaces	Gas
Has Basement	Yes
Basement	Finished, Full

### Exterior

Exterior Features	Private Yard
Lot Description	Private
Roof	Asphalt Shingle
Construction	Wood Frame, Brick, Concrete, Vinyl Siding
Foundation	Poured Concrete

### Additional Information

Date Listed	November 14th, 2024
Days on Market	165
Zoning	R2

**Listing Details**

Listing Office            RE/MAX real estate central alberta

Data is supplied by Pillar 9â„¢ MLSÂ® System. Pillar 9â„¢ is the owner of the copyright in its MLSÂ® System. Data is deemed reliable but is not guaranteed accurate by Pillar 9â„¢. The trademarks MLSÂ®, Multiple Listing ServiceÂ® and the associated logos are owned by The Canadian Real Estate Association (CREA) and identify the quality of services provided by real estate professionals who are members of CREA. Used under license.