

\$500,000 - Lot 2 Plan 9925442 Highway 2, Slave Lake

MLS® #A2134075

\$500,000

0 Bedroom, 0.00 Bathroom,
Land on 94.86 Acres

NONE, Slave Lake, Alberta

Looking for development land? This parcel just off of Highway 2, in a great location and easily accessible, within the Town of Slave Lake boundaries. This 94 acre parcel has many development possibilities with access to it off of MD office turnoff. This parcel can be developed for commercial, industrial or residential depending on what development interest a buyer would have. 94 acres in a great location at a great price!!

Essential Information

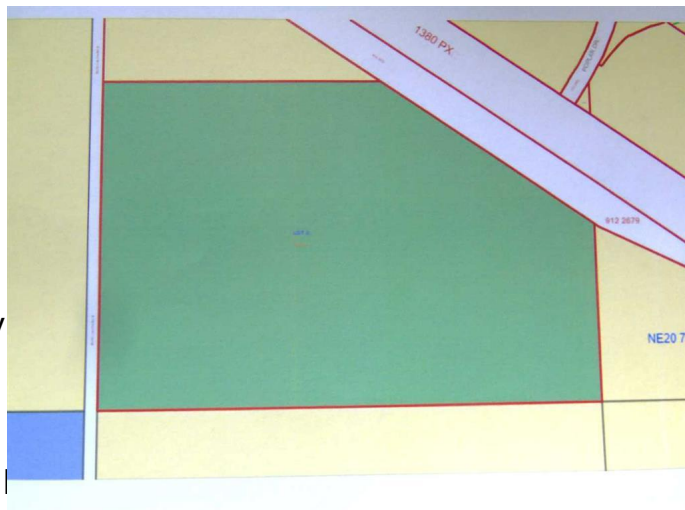
MLS® #	A2134075
Price	\$500,000
Bathrooms	0.00
Acres	94.86
Type	Land
Sub-Type	Commercial Land
Status	Active

Community Information

Address	Lot 2 Plan 9925442 Highway
Subdivision	NONE
City	Slave Lake
County	Lesser Slave River No. 124, I
Province	Alberta
Postal Code	T0G 2A0

Amenities

Utilities	Natural Gas Available
-----------	-----------------------



Additional Information

Date Listed	May 20th, 2024
Days on Market	340
Zoning	Urban Reserve - Commercial

Listing Details

Listing Office	CENTURY 21 NORTHERN REALTY
----------------	----------------------------

Data is supplied by Pillar 9â„¢ MLS® System. Pillar 9â„¢ is the owner of the copyright in its MLS® System. Data is deemed reliable but is not guaranteed accurate by Pillar 9â„¢. The trademarks MLS®, Multiple Listing Service® and the associated logos are owned by The Canadian Real Estate Association (CREA) and identify the quality of services provided by real estate professionals who are members of CREA. Used under license.