

\$384,900 - 2, 6 Riverford Close W, Lethbridge

MLS® #A2118226

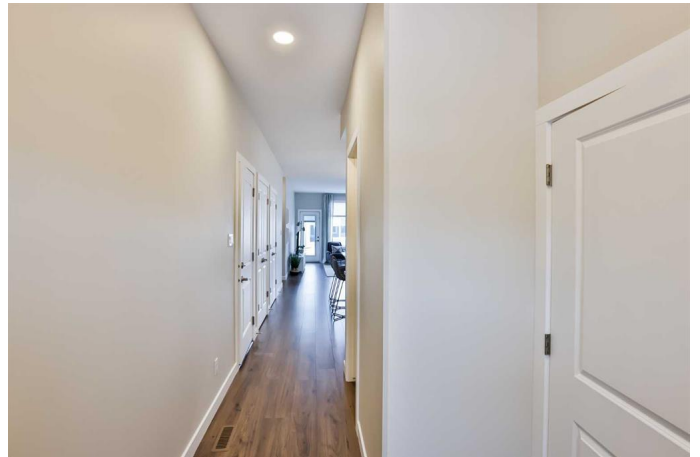
\$384,900

1 Bedroom, 2.00 Bathroom, 905 sqft

Residential on 0.00 Acres

Riverstone, Lethbridge, Alberta

Riverford Villas, by Cedar Ridge Homes, is the great new condo development in Riverstone, arguably one of the best communities in Lethbridge. Can you say luxurious BUNGALOW living?! The Crofton model features open concept living on the main level, with a wonderful primary suite, complete with walk-in closet and four-piece ensuite. Along with a beautiful kitchen, quartz countertops throughout, a two-piece bath, laundry on the main, and an attached single garage. Everything you need is on the main floor! The basement is open for future development, with room for a large family room, two additional bedrooms, a three piece bathroom, and storage room. Riverford Villas offers the luxury of established city living. The neighbourhood is designed around the concept of a village, a place where community means more than the home you live in. Riverstone has a wonderful, large park with mature trees, a fishing pond, and is located close to many other parks, walking paths, restaurants, schools, and more! *pictures are of a similar unit with similar finishes. Interior selections will vary.



Built in 2024

Essential Information

MLS® #	A2118226
Price	\$384,900
Bedrooms	1

Bathrooms	2.00
Full Baths	1
Half Baths	1
Square Footage	905
Acres	0.00
Year Built	2024
Type	Residential
Sub-Type	Row/Townhouse
Style	Bungalow
Status	Active

Community Information

Address	2, 6 Riverford Close W
Subdivision	Riverstone
City	Lethbridge
County	Lethbridge
Province	Alberta
Postal Code	T1K 8K8

Amenities

Amenities	None
Parking Spaces	2
Parking	Single Garage Attached
# of Garages	1

Interior

Interior Features	Stone Counters, Kitchen Island, Open Floorplan, Pantry, Storage, Sump Pump(s), Walk-In Closet(s)
Appliances	Dishwasher, Microwave Hood Fan, Refrigerator, Stove(s), Washer/Dryer Stacked, Window Coverings
Heating	Forced Air, Natural Gas
Cooling	None
Has Basement	Yes
Basement	Full, Unfinished

Exterior

Exterior Features	Other
Lot Description	Interior Lot, Level, No Neighbours Behind
Roof	Asphalt Shingle

Construction	Vinyl Siding, Wood Frame
Foundation	Poured Concrete

Additional Information

Date Listed	April 25th, 2024
Days on Market	462
Zoning	R-CL

Listing Details

Listing Office	RE/MAX REAL ESTATE - LETHBRIDGE
----------------	---------------------------------



Data is supplied by Pillar 9â„¢ MLS® System. Pillar 9â„¢ is the owner of the copyright in its MLS® System. Data is deemed reliable but is not guaranteed accurate by Pillar 9â„¢. The trademarks MLS®, Multiple Listing Service® and the associated logos are owned by The Canadian Real Estate Association (CREA) and identify the quality of services provided by real estate professionals who are members of CREA. Used under license.